

1502/1 Sergeants Lane St Leonards, NSW



Resort-like lifestyle in the heart of St Leonards

FIRST INSPECTION SATURDAY 16 NOVEMBER 10:00 - 10:45AM

Rising 15 floors above the pulsing heart of St Leonards, this exceptional contemporary apartment promises a lifestyle simply beyond compare. Boasting two balconies and captivating scenes of the city skyline, harbour and the Blue Mountains, it features an exceptionally bright and spacious layout, modern finishes and 5-star resort facilities on-site. Set within the exclusive 'Forum' security building with rail, shopping and eateries by the doorstep, it is a short stroll to RNS Hospital plus Crows Nest's metro station and vibrant dining hub.

Features:

- A premium lifestyle haven or investment in a rapidly expanding growth hotspot
- Extensive light-flooded living space with a separate dining area by the kitchen
- Giant glass walls frame the views and open to an oversized covered balcony
- Gourmet open plan granite and gas kitchen with a stainless steel dishwasher
- Spacious bedrooms with mirrored built-ins, the main opens to a private balcony
- Modern bathroom, internal laundry, full brick, gas outlet and video intercom

Auction: 07/12/2024 11:00 am

Price: Auction - Contact Agent

Council Rates: \$416.00 p/q

Water Rates: \$172.00 p/q

Strata Rates: \$2,053.00 p/q



David Hill

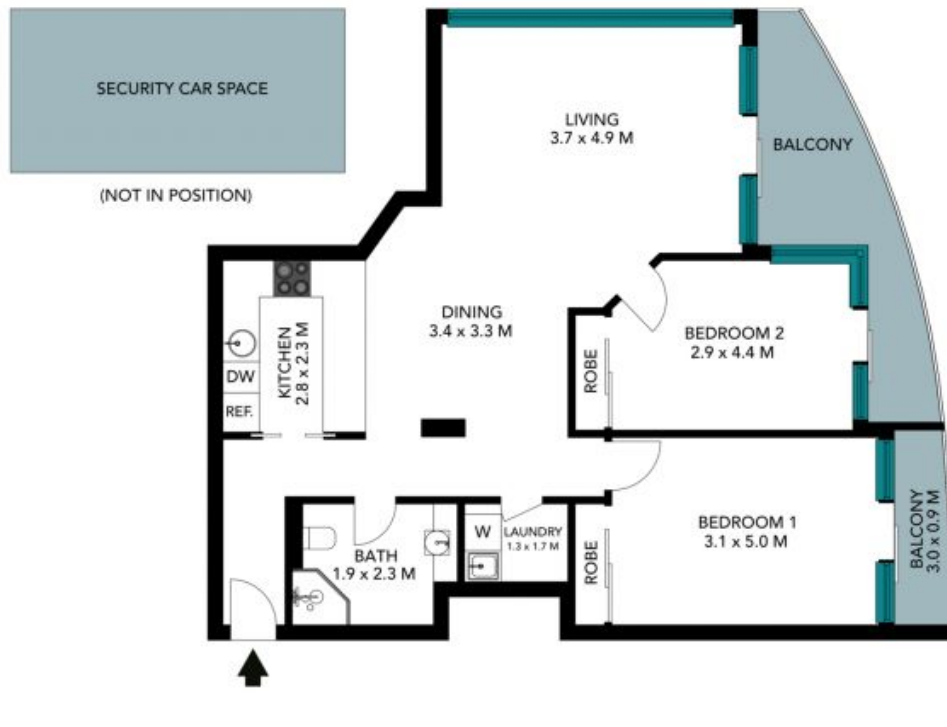
0411 491 122



Ruby Johnson

0432 869 227

1502/1 Sergeants Lane
St Leonards



The floor plan is not to scale, measurements are indicative and in metres. Exterior elements are not in position. Plans should not be relied on. Interested parties should make and rely on their own enquiries. All other information provided has been collected from reliable sources but cannot be guaranteed for accuracy.

1502/1 Sergeants Lane
St Leonards



The floor plan is not to scale; measurements are indicative and in metres. All features included in this 3D plan are for inspiration purposes only. This is not an exact replica of the property or the position of exterior elements. Plans should not be relied on. Interested parties should make and rely on their own enquiries.