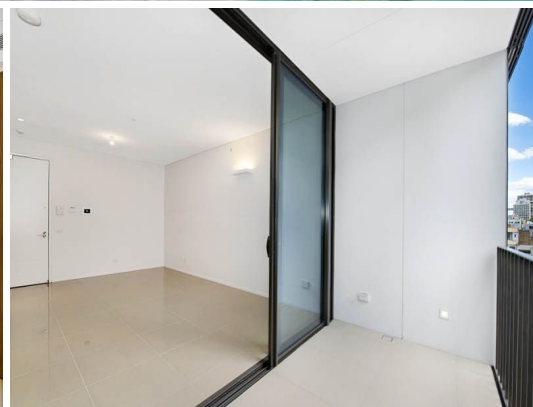
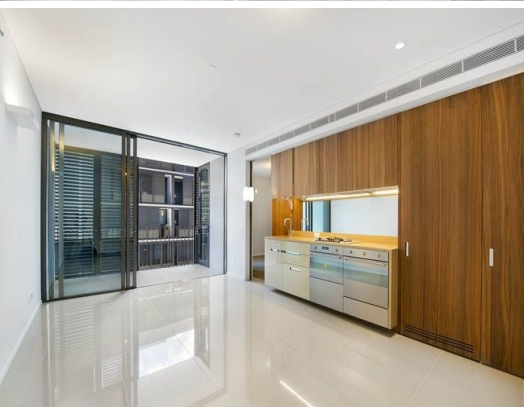


STONE



515/8 Park Lane Chippendale, NSW



One Bedroom + Study Nook with Pool and Gym

Located in Park Lane, one of Central Park's exclusive residences, this executive one bedroom apartment is perfect for the busy executive, offering convenience in location, lifestyle and facilities.

- Modern, one bedroom apartment plus study nook
- Combined & tiled living areas lead onto a protected balcony
- Sleek gas kitchen with a mix of stainless steel and timber finishes, fridge and dishwasher included
- Spacious bedroom with built in robes, connecting to balcony and modern bathroom
- Additional features include storage cage, air con and internal laundry with combined washer/dryer
- Central Park features a 6,400sqm park + the world's tallest vertical gardens, designed by French Botanist Patrick Blanc
- Park Lane features a 24/7 concierge & security, pool, gym, spa and a multi shopping mall, GoGet car share facilities within the building.

Price: \$760 per week

Bond: \$3,040

Available Date: 29/11/2024



Buster Redman

0412 630 727



Paul Alam

0422 004 969

515

1 bedroom + study

Int 45.5sqm

Ext 7.6sqm

Total 53.1sqm

