

15/11-13 Rowe Street Freshwater, NSW



Oversized top floor apartment in a prime location

One of the largest one bedroom apartments you're likely to see, this bright and spacious residence provides an instantly liveable haven. Placed on the top floor with only two flights of access stairs, it is only 230m to buses travelling to Manly Beach and Wharf, Warringah Mall and express to the city and within a stroll of Manly Lagoon, Queenscliff Beach or Freshwater Village and Beach.

- Enormous L-shaped living space with separate dining area by the kitchen
- Tidy gas kitchen is highly functional yet offers further scope to upgrade
- Extra-large bedroom with built-in with leafy outlooks and space for a study
- Modernised bathroom with glass shower, high ceilings and plantation shutters
- Eight minute wander to Freshwater Village, nine minute stroll to Harris Farm
- 12 minute walk to Freshwater Beach or Queenscliff Beach via the lagoon path
- Lock-up garage, internal laundry with allocated space for your own machine

Inspect:

Saturday, 16th November 2024 12:00 - 12:15

Price: \$650 pw

Bond: \$2,600

Available Date: 22/01/2024



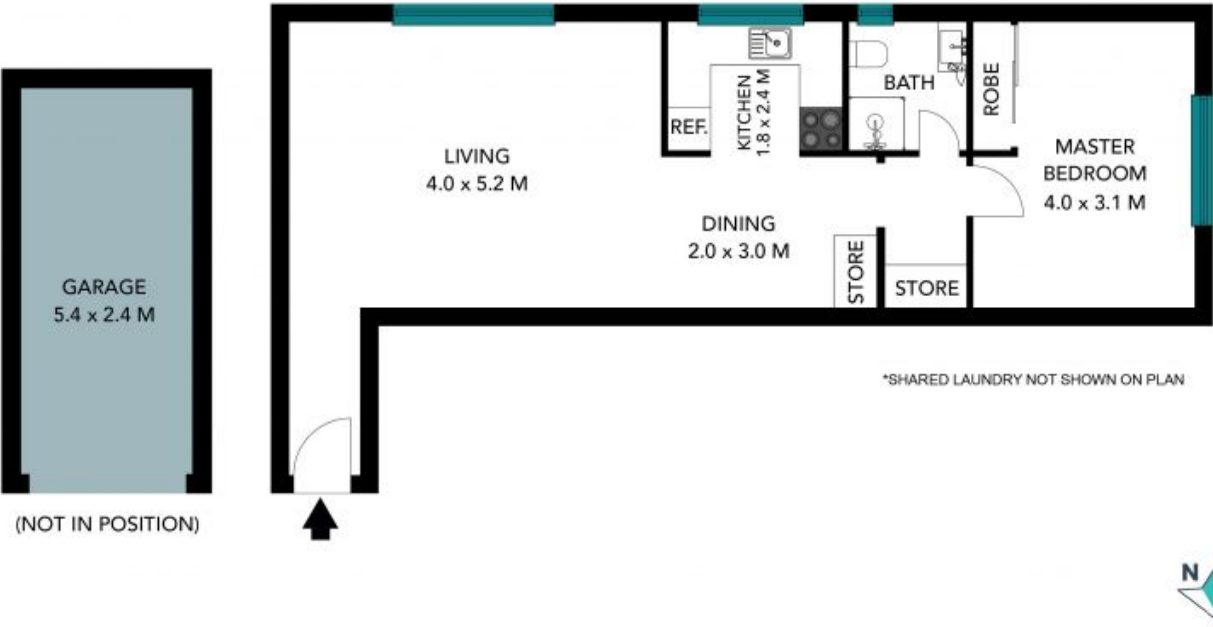
Michael Egan

0499 172 009



Rodney Scurrall

0499 268 455



The floor plan is not to scale; measurements are indicative and in metres. Exterior elements are not in position. Plans should not be relied on. Interested parties should make and rely on their own enquiries. All other information provided has been collected from reliable sources but cannot be guaranteed for accuracy.

15/11 Rowe Street
Freshwater



*SHARED LAUNDRY NOT SHOWN ON PLAN



The floor plan is not to scale; measurements are indicative and in metres. All features included in this 3D plan are for inspiration purposes only. This is not an exact replica of the property or the position of exterior elements. Plans should not be relied on. Interested parties should make and rely on their own enquiries.