



14/7-9 Pittwater Road Manly, NSW



## Sunlit security apartment in a brilliant location

From its spacious contemporary layout and modern finishes to its sun-drenched terrace and unbeatable beachside location, this amazing one-bedder delivers the ultimate beach pad for executives, downsizers, weekenders or investors. Placed on the fourth floor of a modern security building with lift access, it is set on the fringe of the village with a hotpot of thriving eateries only footsteps away, two minutes barefoot to Manly Beach and a five-minute scurry to city ferries at Manly Wharf.

- Bright open living space includes a dining area with a fitted timber table
- Double glass sliders open to a sizable sunlit terrace with an easterly aspect
- Modern island kitchen with a gas cooktop and a stainless steel dishwasher
- Large bedroom with mirrored built-ins, tidy bathroom with shower over bath
- Internal laundry, full brick, engineered timber floors, air-con and gas outlet
- Metres to cafes, restaurants, buses, tennis courts and picturesque Manly Oval
- Short stroll to Manly Beach and the Manly Village shopping and dining mecca
- Covered secure car space access via a rear lane, covers a sizable 67sqm on title

Strata Rates: \$1,362.50pq approx.

**Inspect:** Saturday, 16th November 2024 10:00 - 10:30  
Wednesday, 20th November 2024 10:00 - 10:30

**Price:** Auction



**Candice Cattell**

0417 311 777



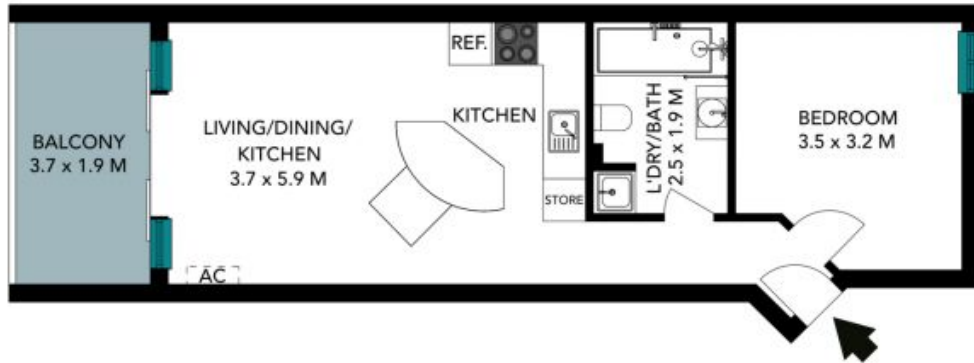
**Sam Bursill**

0449 969 452

14/7-9 Pittwater Road  
Manly



(NOT IN POSITION)



The floor plan is not to scale, measurements are indicative and in metres. Exterior elements are not in position. Plans should not be relied on, interested parties should make and rely on their own enquiries. All other information provided has been collected from reliable sources but cannot be guaranteed for accuracy.

14/7-9 Pittwater Road  
Manly



The floor plan is not to scale; measurements are indicative and in metres. All features included in this 3D plan are for inspiration purposes only. This is not an exact replica of the property or the position of exterior elements. Plans should not be relied on. Interested parties should make and rely on their own enquiries.