



9/515 Kent Street Sydney, NSW

2 

2 

1 

## Centrally Located in Renowned Maestri Towers

Located in the heart of Sydney's vibrant Central Business District, this stylish and contemporary 2-bedroom apartment offers the perfect blend of convenience, comfort, and city living. Situated within walking distance of world-class dining, shopping, entertainment, and transport options, this property is ideal for professionals, couples, or small families seeking to enjoy everything the city has to offer, or investors looking for a top yield.

Contemporary finishes and a relaxed layout for stylish ease of living. It features a generous lounge and dining area which opens to a covered entertaining balcony plus a modern gas kitchen. The bedrooms are both a good size while occupants also enjoy access to city-style facilities and secure basement parking.

### Features:

-Generous Living Area: A bright and open-plan living and dining space, with large windows allowing an abundance of natural light

-Two Generous Bedrooms: The master bedroom features built-in wardrobes, while the second b...

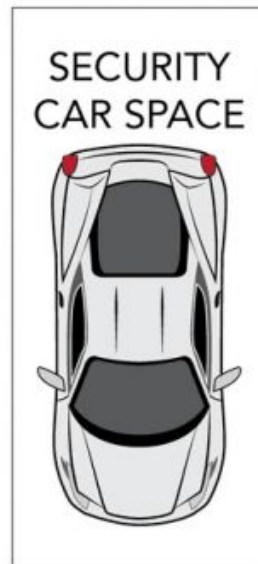
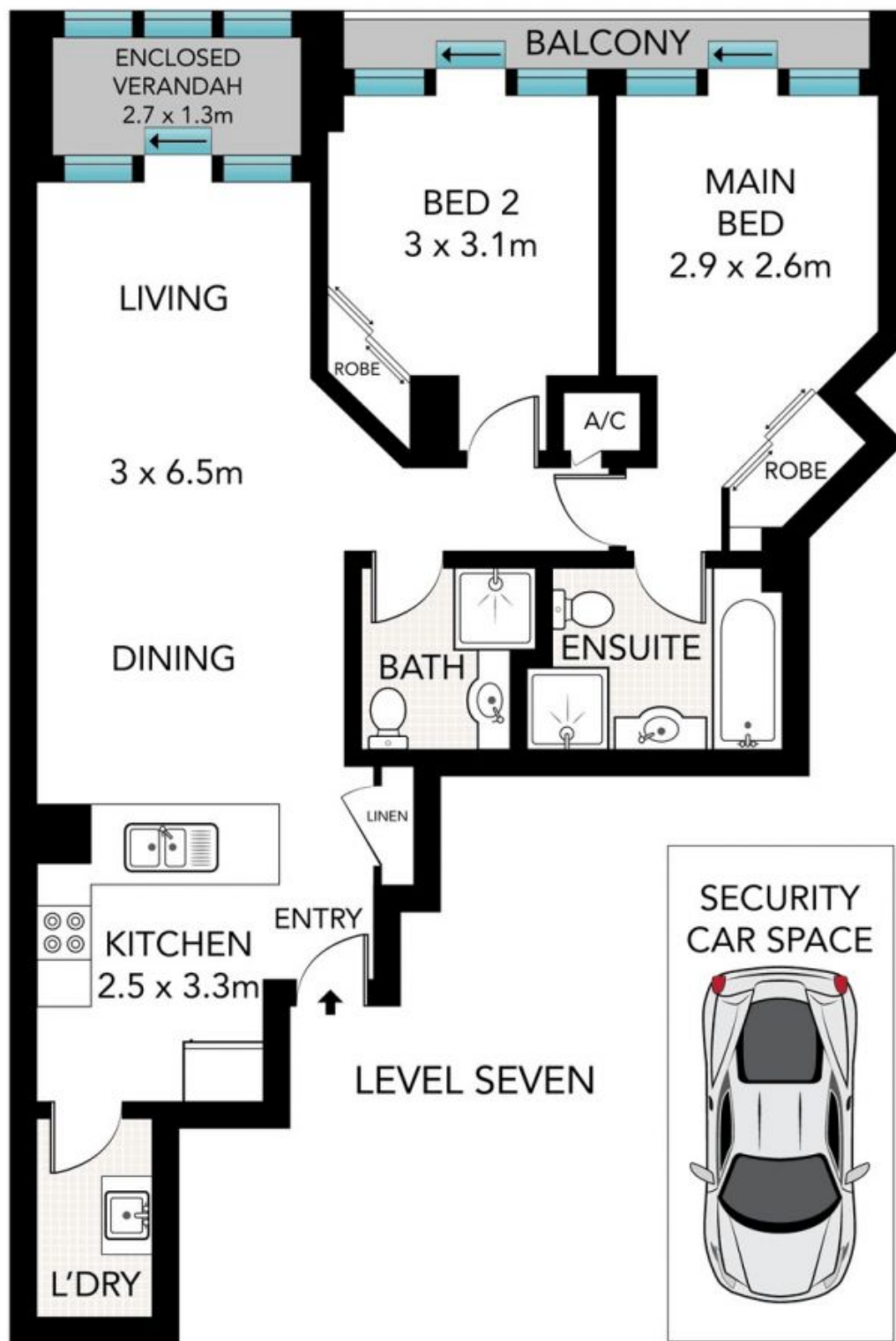
Price:

Contact Agent



**Alvin Ngiam**

0466 090 928



(NOT IN POSITION)



Scale in metres. Indicative only. Dimensions are approximate. All information contained herein is gathered from sources we believe to be reliable. However, we cannot guarantee its accuracy and interested persons should rely on their own enquiries.

