

270 Mandalay Circuit Beveridge, VIC



The best rental in Beveridge!

This custom-built family home is freshly painted and set up for fun, function, and endless family moments.

With a jaw-dropping kitchen with a massive 4-metre, 60mm stone island bench that's perfect for everything from family breakfasts to Friday night get-togethers. The large walk-in butler's pantry adds that extra touch of convenience, keeping everything organized and out of sight.

Outside, the sprawling deck invites you to dive into the swim spa, while the second decked area with a cozy hut screams for BBQs and weekend hangouts. And with the huge side access, there's all the room you need for the caravan or boat, ready for your next family adventure.

Features-

- Large block with double gated side access
- Composite decking

Price: \$600 pw
Bond: \$2,607
Available Date: 16/12/2024



Jessica Conte-Singh

0400 134 550

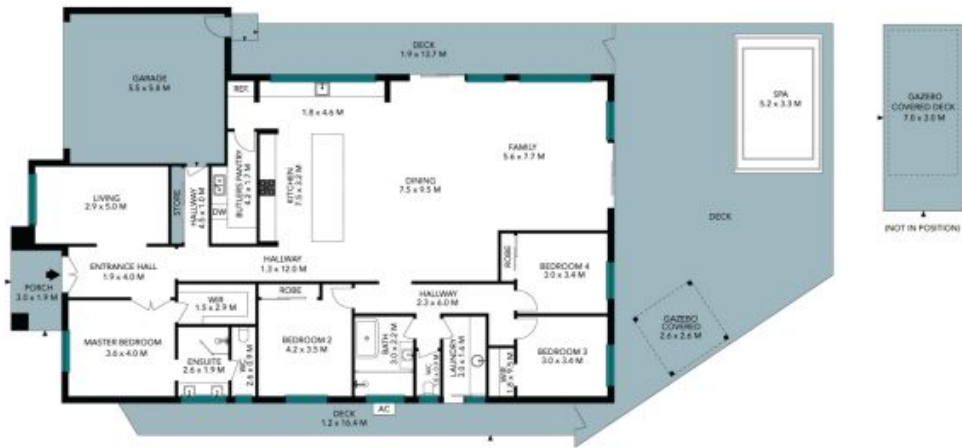


Caitlin Groat

0455 332 296



Site Plan



The site plan and floor plan are not to scale; measurements are indicative and in metres. Bushes and trees are placed for illustration purposes. Plans should not be relied on. Interested parties should make and rely on their own enquiries. All other information provided has been collected from reliable sources but cannot be guaranteed for accuracy.



The floor plan is not to scale; measurements are indicative and in metres. All features included in this 3D plan are for inspiration purposes only. This is not an exact replica of the property or the position of exterior elements. Plans should not be relied on. Interested parties should make and rely on their own enquiries.