



8 Wandanea Place Margate, TAS

3

1

2

### IDEAL FIRST HOME

Looking for your first home? This bright and airy home located at the end of a peaceful cul-de-sac in Margate, is perfect for first-time home buyers or those looking to downsize.

Each bedroom is equipped with built-in wardrobes, while the spacious living area features charming French doors that open to the front garden.

The kitchen includes a dedicated dining space, along with a separate laundry for added convenience.

The backyard is well-maintained, offering a garden shed, a concrete patio, and a generous 6m x 6m double garage.

Ample parking available for a boat, caravan, or extra vehicle.

**Price:**

Offers Over \$620,000



**Wendy Wade**

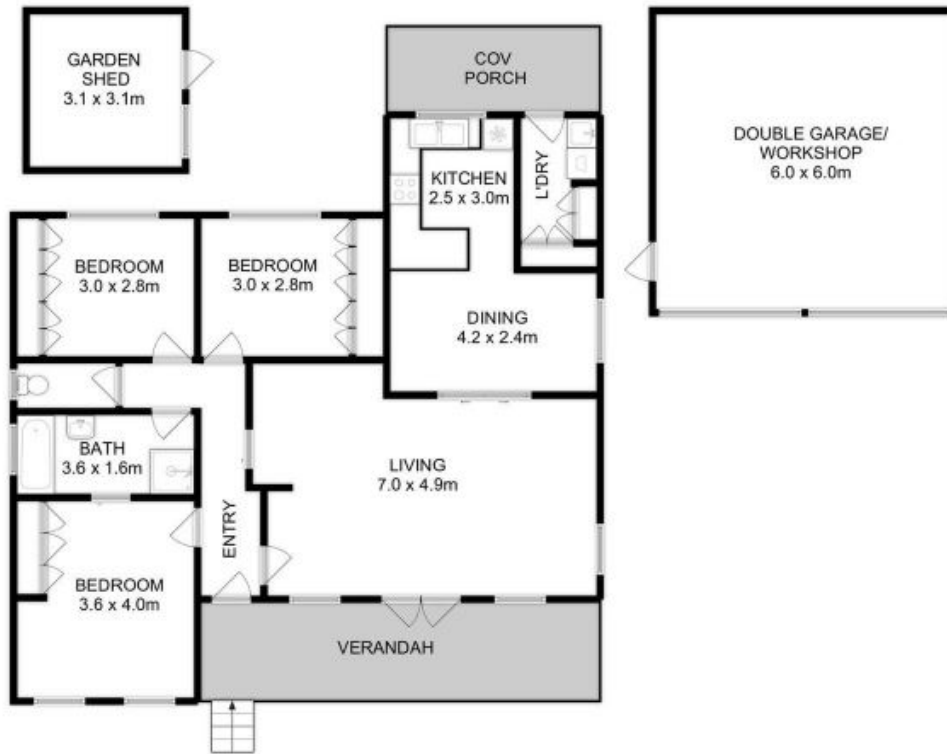
0418 561 538



**Louise Wallace**

0429 671 462

\*\* We have obtained all information in this document from sources we believe to be reliable.



Total Approx. Floor Area : 111 sqm  
 Total Approx. Outbuilding Area : 45 sqm



All measurements are internal and approximate.  
 This plan is a sketch for illustration, not valuation.  
 Produced by Open<sup>2</sup>view.com