



128 Hannah Street Beecroft, NSW

3 

1 

2 

Renovate or Detonate in Beecroft Primary and Cheltenham Girls High zones

Ripe for a transformation, this classic residence presents an enticing blank canvas on a generous 708.2sqm corner block with a desirable north-to-rear aspect. An invitation to craft a prized family home of accessibility and possibility with sweeping views of the city skyline (STCA), it's located in the sought-after Beecroft Public, Cheltenham Girls and Carlingford High school catchments.

- Brimming with remarkable future prospects, interiors in original condition
- Set in a popular Beecroft street and family-minded neighbourhood
- Approx. 1.5km to Beecroft station and village delights, and 1.1km to Golf Club
- Fantastic transport options, located an approx. 270m stroll to city express buses
- Ideal for commuters, with easy access to arterial roads, including the M2, M7
- Spacious lounge room opening to a wraparound verandah with cityscape outlook
- Open-plan family and dining zones, three sizeable bedrooms, all with BIRs
- Traditional kitchen with adjoining laundry; bathroom with bath, corner shower

Inspect: Saturday, 9th November 2024 9:15 - 9:45
Auction: 30/11/2024 05:00 pm

Price: Auction Guide \$1,300,000
Council Rates: \$565.90 p/q
Water Rates: \$172.79 p/q



Kevin Dearlove

0403 338 302



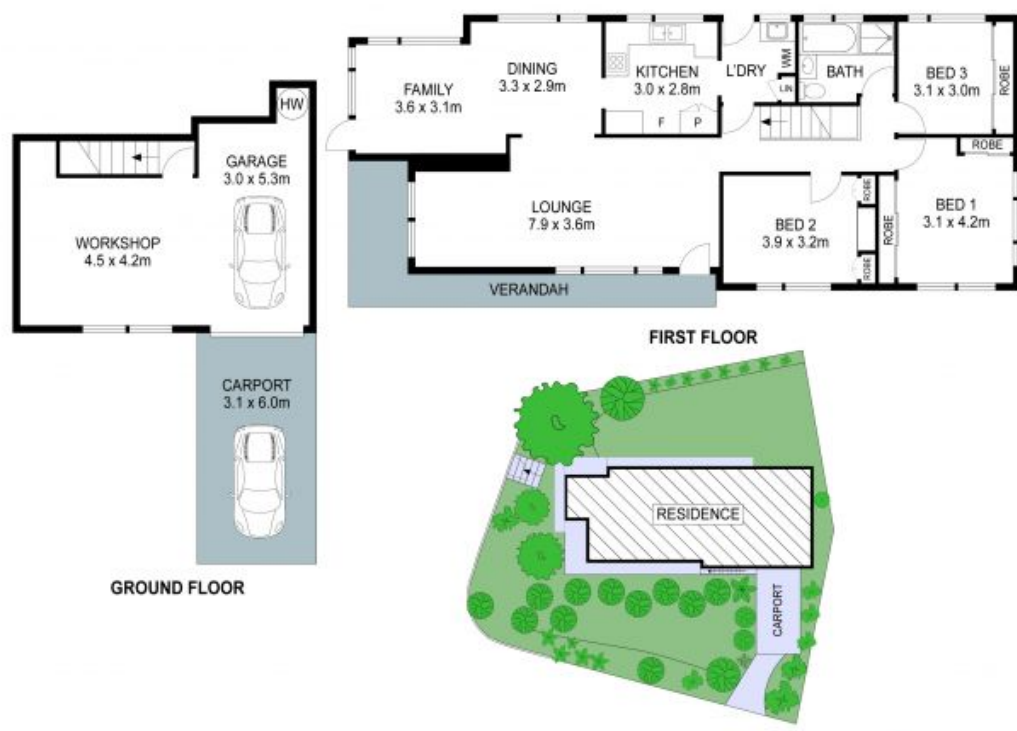
Leo Li

0404 917 188

128 Hannah Street, Beecroft

3 1 2 708.2m²

STONE



THIS IS AN ARTIST'S IMPRESSION - ALL DIMENSIONS, LAYOUTS AND TREES ARE APPROXIMATE
ALL INTERESTED PARTIES SHOULD MAKE AND RELY ON THEIR OWN ENQUIRIES

