



2 Ibsen Street Aspley, QLD



Hilltop Haven

Welcome to this impressive brick behemoth, proudly set on an elevated 592sqm corner block, offering wide, sweeping vistas in one of the area's most sought-after pockets. Perfect for those seeking both convenience and an exceptional outlook, this home is a rare find, offering both scale and quality in a highly desirable location.

- Large 592sqm corner block
- Elevated North/South facing aspect with beautiful views and bay breezes
- Side access via Ferrier St
- Large under-house storage area
- Dual multipurpose rooms
- Freshly painted throughout
- NBN connected - Fibre to the Premise
- Large 10,000L water tank with pump

Price:

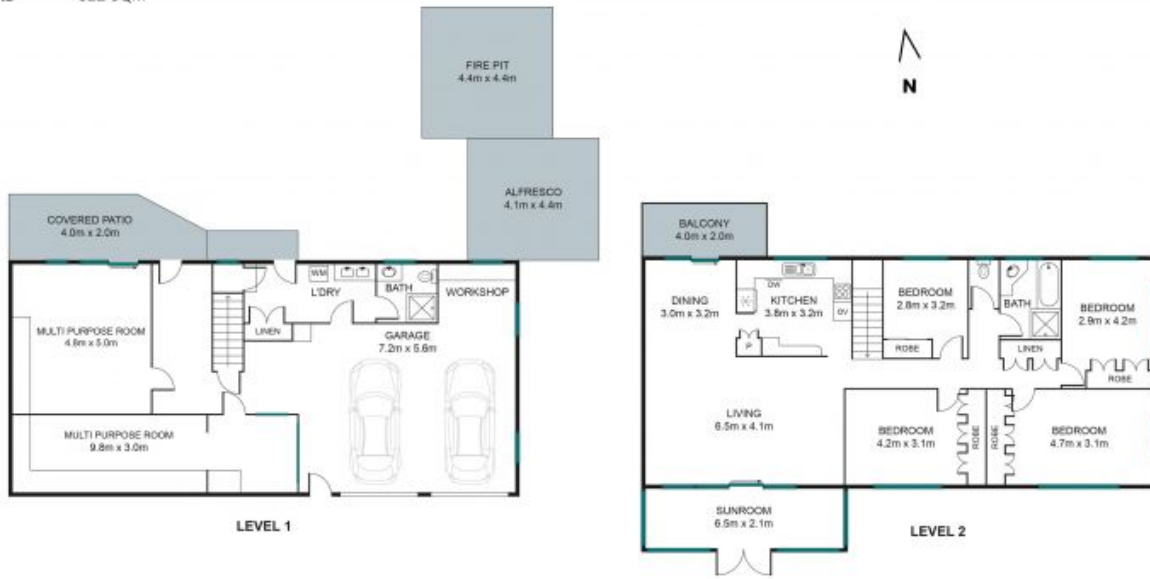
For Sale Now



Tristan Rowland

0411 572 970

INTERNAL 286 SQM
EXTERNAL 56 SQM
TOTAL 322 SQM



Whilst every attempt has been made to ensure the accuracy of the floor plan contained here, measurements of doors, windows and rooms are approximate and no responsibility is taken for any error, omission or mis-statement. These plans are for representation purposes only.

2 Ibsen Street, Aspley

Stoneaspley.com.au

