



234/25 Wentworth Street Manly, NSW



## Blissful resort-like beach and village lifestyle

Considerably larger than your average one-bedroom apartment, this exclusive contemporary apartment is set within the resort-like 'Peninsula' security building with village shopping, simmering a hotpot of cosmopolitan eateries and world-famous Manly Beach literally metres from the doorstep. Complete with a separate home office, large northeast balcony plus a heated pool, sauna and gymnasium on-site, it offers the ultimate lifestyle pad for executives, downsizers and weekenders or a premium investment opportunity.

- Generously proportioned living space with a dining area by the kitchen
- Sliding glass doors open to a sizable covered northeast entertainers' balcony
- Tidy open-plan granite and gas kitchen with a stainless steel dishwasher
- Spacious bedroom with a mirrored built-in wardrobe opens to the terrace
- The large home office can double as a sleepover space for occasional guests
- Spotless bathroom with marble vanitytop, scope to refurbish the apartment
- Sunny rooftop barbecue terrace, heated pool, spa, sauna and gym on-site
- Footsteps to Manly Beach, supermarkets, cosmopolitan eateries and Manly Wharf

**Inspect:**

Saturday, 16th November 2024 9:00 - 9:30  
Wednesday, 20th November 2024 9:00 - 9:30

**Price:**

Contact Agent



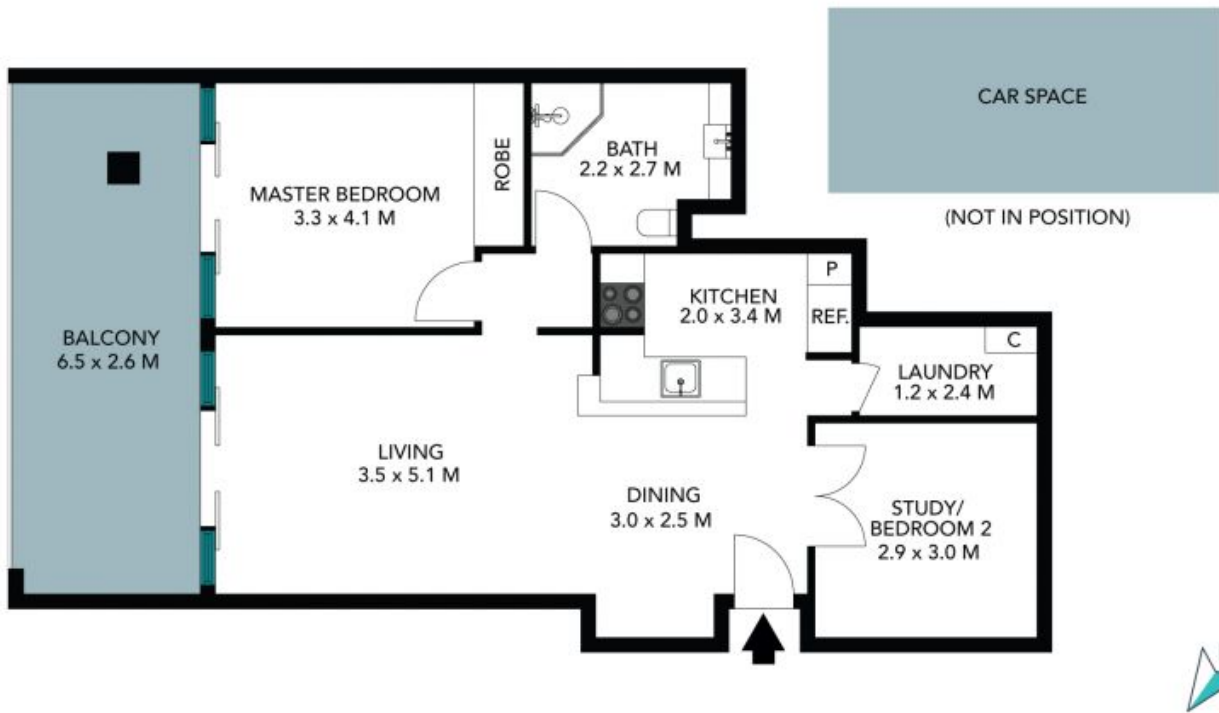
**Candice Cattell**

0417 311 777



**Sam Bursill**

0449 969 452



The floor plan is not to scale, measurements are indicative and in metres. Certain elements are not in position. Plans should not be relied on. Interested parties should make and rely on their own enquiries. All other information provided has been collected from reliable sources but cannot be guaranteed for accuracy.

234/25 Wentworth Street  
Manly

STONE



The floor plan is not to scale; measurements are indicative and in metres. All features included in this 3D plan are for inspiration purposes only. This is not an exact replica of the property or the position of exterior elements. Plans should not be relied on. Interested parties should make and rely on their own enquiries.