



3468 Channel Highway Woodbridge, TAS



## WRITE THE NEXT CHAPTER IN THIS CHURCH'S STORY

This charming 1885 church, nestled in the heart of Woodbridge Village, offers a unique opportunity for the right astute buyer.

With its distinctive character and versatile potential, this property could potentially be transformed into an art studio, meeting hall, cozy coffee shop, or even a residence / holiday accommodation (all subject to council approval).

St. Simon and St. Jude's Anglican Church, Woodbridge, is steeped in history and is part of the Parish of Channel-Cygnnet within the Diocese of Tasmania. Consecrated in 1885 by Rt Rev Dr. Sandford, Bishop of Tasmania, the church was built on land donated by Mr. Potter.

This historic gem presents endless possibilities for its future and would appeal to buyers seeking rare, character-filled properties.

Price: Offers Over \$320,000



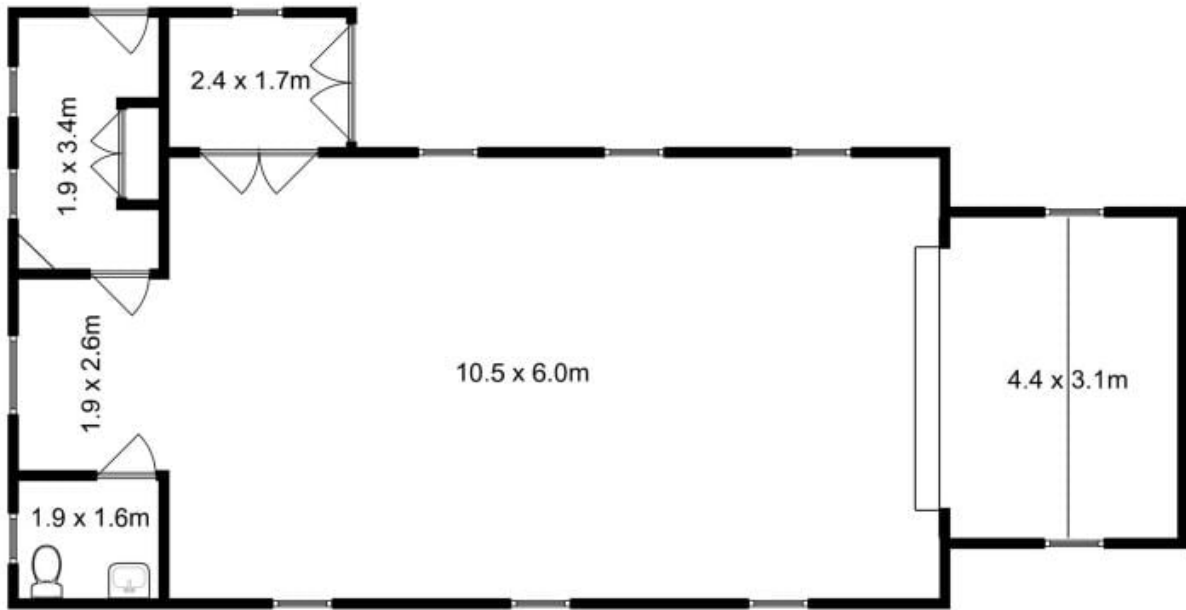
**Wendy Wade**

0418 561 538



**Wendy Wade**

0418 561 538



Total Approx. Floor Area : 104 sqm

All measurements are internal and approximate.  
This plan is a sketch for illustration, not valuation.  
Produced by Open2view.com