



192 Abbotsfield Road Claremont, TAS

3

1

1

Exciting Development Opportunity Not to be Missed

This is a significant opportunity to capitalize and secure prime land for a development opportunity (STCA).

The property is located within 5 minutes from the centre of Claremont and is close to all facilities.

The property comprising of 3 Titles, with a zoning of General Residential, is a total of 1.61ha approximately and will be sold as one.

The three-bedroom, one- bathroom house located on 632sqm (approx.) is in immaculate condition and is complemented by well maintained gardens and offers fantastic views over the adjoining titles.

The wonderful gardens inclusive of a variety of fruit trees and vegetables extends onto a further 783sqm of vacant prime land.

There are a total of two access points to the property directly off Abbotsfield Road, and ...

Price:

Expressions of Interest



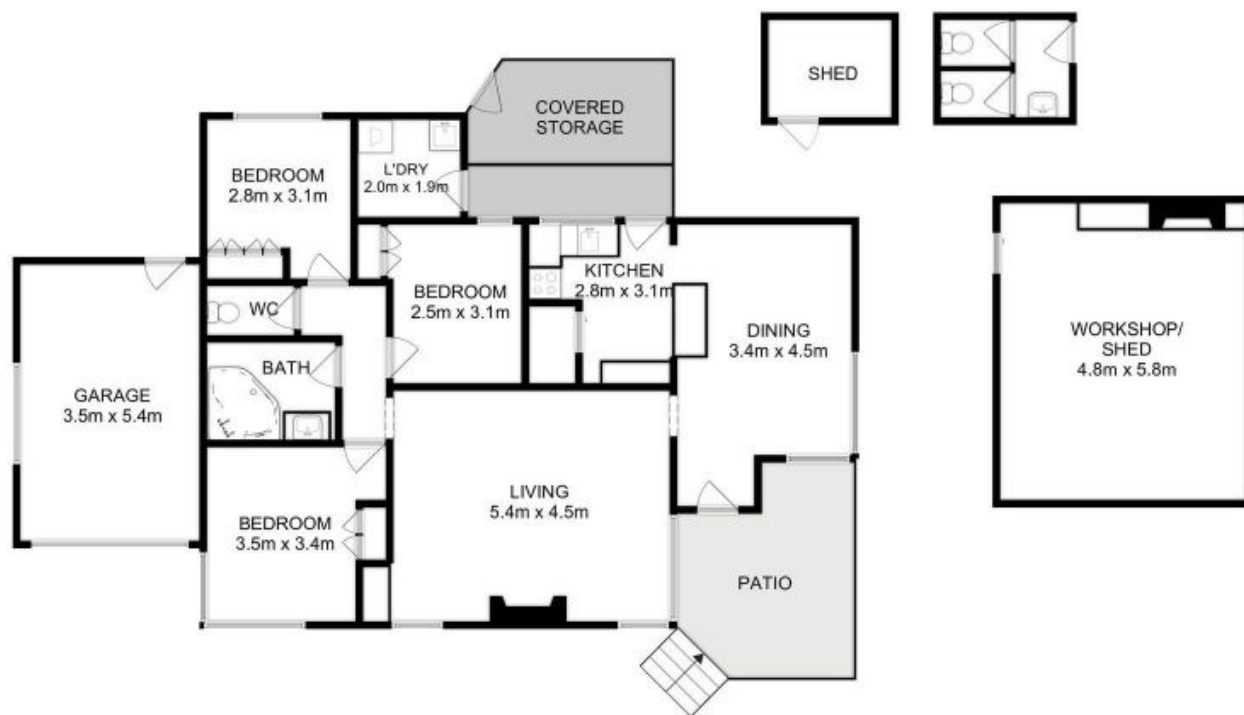
Louise Wallace

0429 671 462



Louise Wallace

0429 671 462



Total Approx. Floor Area (inc. Garage) : 125 sqm
 Total Approx. Outbuilding Area : 38 sqm

All measurements are internal and approximate.
 This plan is a sketch for illustration, not valuation.
 Produced by Open2view.com