



10 Glen Ellen Rise Kingston, TAS

2

1

2

## SIMPLY MOVE IN AND ENJOY

This well presented 2 bedroom unit in the popular Redwood Village offers low maintenance living for over 50's. The property is within walking distance to shops and facilities in Kingston and just a 15 minute drive to the Hobart CBD. The unit is 120m2 (approx.), sits on 496m2 of land (approx.) and has beautiful mountain views visible from many of the windows and front garden.

The home is of brick veneer construction, offers open plan kitchen and living, two generous sized bedrooms with built ins, a well sized bathroom plus powder room, single car garage with internal access and a versatile enclosed porch area at the front of the home.

In the Kitchen you will find plenty of space, storage and modern electric appliances including a dishwasher and refrigerator.

...

With fresh paint and new carpet throughout, this property is ready for you to simply move ...

**Price:**

Offers Over \$549,000



**Cloe Smith**

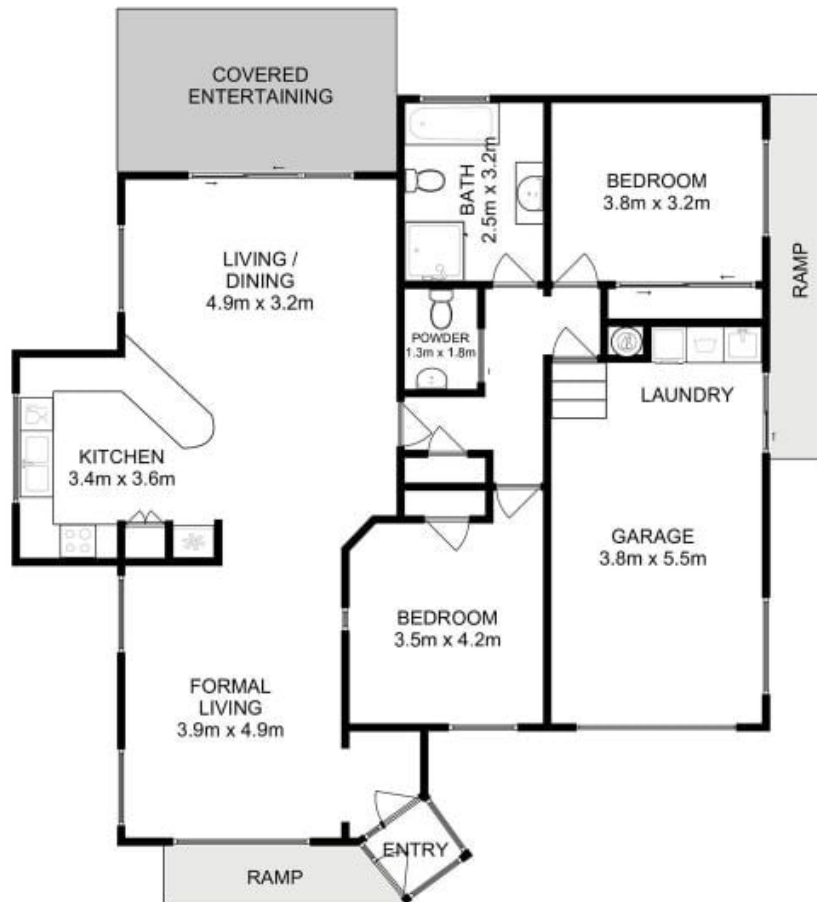
0400 581 227



**Cloe Smith**

0400 581 227





Total Approx. Floor Area : 150 sqm  
(Including Garage)

All measurements are internal and approximate.  
This plan is a sketch for illustration, not valuation.  
Produced by Open2view.com