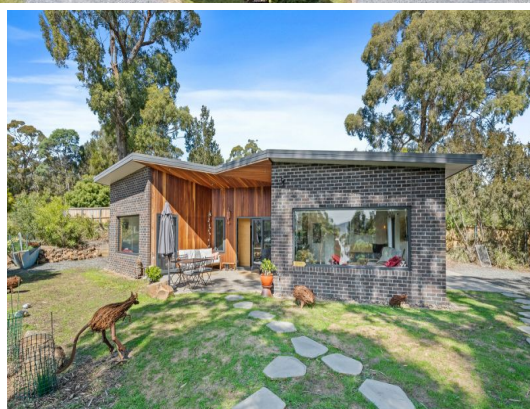


STONE



10 Rivington Close Coningham, TAS

5

3

7

DUAL RESIDENCE OPPORTUNITY

Located in a peaceful cul-de-sac in the highly sought-after suburb of Coningham, this dual-residence property offers exceptional privacy, surrounded by trees and natural beauty. It's an ideal arrangement for extended families or for offering comfortable guest accommodation.

The solidly built family home feels spacious and welcoming, with its north-east facing living room and kitchen filled with light and boasts views to the Reserve and across to North West Bay.

...

...

The generously proportioned kitchen feels even more spacious with a smoked mirror splashback and is equipped with quality appliances, including an induction cooktop and dishwasher. ...

...

The high ceilings and radiant ceiling heaters enhance the overall feeling. The main bedroom enjoys water views, and the light-filled home is centered around a lovely courtyard, per...

Price:

Expressions of Interest



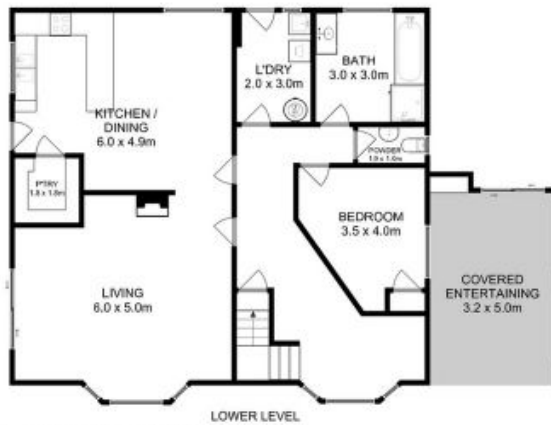
Wendy Wade

0418 561 538



Wendy Wade

0418 561 538



Total Approx. House Area : 215 sqm
 Total Approx. Studio Area : 74 sqm
 Total Approx. Outbuilding Area : 63 sqm

All measurements are internal and approximate.
 This plan is a sketch for illustration, not valuation.
 Produced by Open2view.com