



16 Maize Avenue Spring Farm, NSW

4 2 2

Luxury family home

Discover this beautifully crafted single-storey home by Edgewater Homes designed to offer both comfort and luxury in every detail. Situated in the desirable Spring Farm area, this property is located with view of the tranquil Stubby Tree Display Reserve, adding natural beauty to your everyday views.

Property Highlights:

- > 4 Spacious Bedrooms: Each bedroom is equipped with walk-in robes for ample storage, making it perfect for families of all sizes.
 - > Master Suite with Ensuite: The master bedroom features a double vanity ensuite with a separate toilet and a walk-in robe, ensuring privacy and convenience.
 - > Garage: Secure two-car garage providing ample parking and storage space.
- Air Conditioning: Ducted air conditioning throughout for ultimate comfort in every season.
- > Single Storey: Ease of access and no stairs, ideal for families and anyone seeking single-level living.

...
...
...
...

Inspect:

Price: \$1,099,000 - \$1,199,000

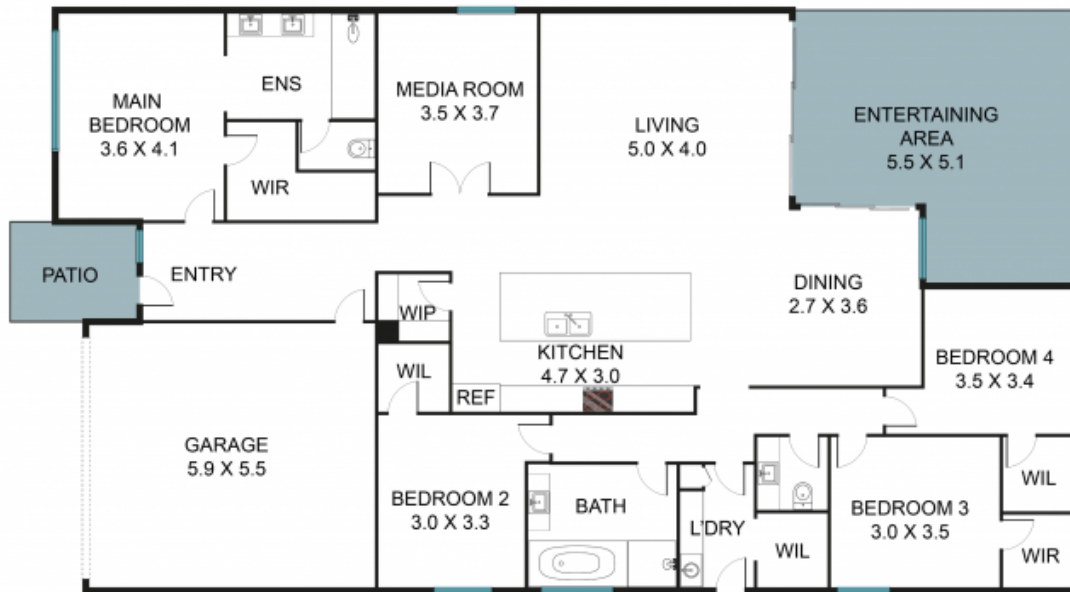


Chris York
0405 434 414



Adriana Hayek
0421 162 855

STONE



16 Maize Ave, Spring Farm NSW 2570



The floor plan is not to scale, measurements and in metres. Exterior elements are not in position.
Plans should not be relied on. Interested parties should make and rely on their own enquiries.
All other information provided has been collected from reliable sources but cannot be guaranteed for accuracy.