



6/4-6 Park Avenue Waitara, NSW



### Modern Apartment in Prime Location!

Nestled in the heart of Waitara, this contemporary apartment, situated on level 1, offers a blend of comfort and convenience. Stepping inside, you're greeted by a combined living and dining area that flows seamlessly onto a spacious, north-facing balcony ? ideal for soaking up natural sunlight and enjoying the serene views. The open-plan kitchen boasts a sleek stone benchtop, high-quality finishes, and modern appliances, including a dishwasher, rangehood, and gas cooktop, making it perfect for both everyday meals and entertaining.

...  
Features:...

- Private light-filled apartment with north facing balcony
- Modern kitchen with a stone benchtop, gas cooktop, rangehood, and dishwasher
- Combined open plan living and dining area
- Internal laundry and storage
- Security parking space plus a lock-up storage cage on title

**Inspect:** Saturday, 9th November 2024 10:30 - 11:00

**Price:** Price Guide \$780,000



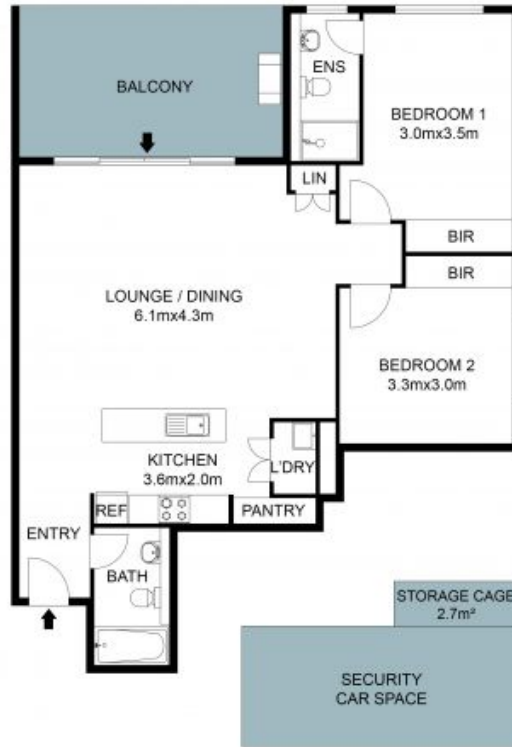
**Adam Noakes**

0450 753 268



**Angel (Qinghua) Li**

0452 532 578



Floor Plan

The Floor plan is not to scale; measurements are indicative and in metres. Plans should not be relied on. Interested parties should make and rely on their own enquiries. All other information provided has been collected from reliable sources but cannot be guaranteed for accuracy.