



20c Lyne Road Cheltenham, NSW

5

3

2

Family Oasis with Room to Grow and Entertain

Expertly crafted for evolving family needs, the expansive layout of this cleverly designed split-level home offers a sense of space enhanced by fresh updates and luxurious appointments. Built by its current owners and cherished for 23 years, it's a masterclass in functional space, in the Epping Heights Public, Cheltenham Girls, Epping Boys and Carlingford High catchments.

- Tucked blissfully back from the street on a generous 600.8sqm parcel of land
- Freshly painted interiors with superb outdoor flow and abundant natural light
- Brand new travertine patio and pergola, nestled in private, manicured gardens
- Stylish polished hardwood turpentine and elegant Blackbutt parquetry flooring
- Sunlit lounge/dining, living room, casual meals, dedicated art studio/office
- Updated kitchen with gas cooktop, double wall oven, shaker-style cabinetry
- Generous bedrooms, five with built-ins, plus flexible study or home office
- Spacious master with refreshed ensuite, modern vanity, and gold accents

Inspect: Saturday, 9th November 2024 11:00 - 11:30
Auction: 24/11/2024 11:00 am

Price: Premiere Showing
Council Rates: \$650.10 p/q
Water Rates: \$172.79 p/q



Kevin Dearlove

0403 338 302

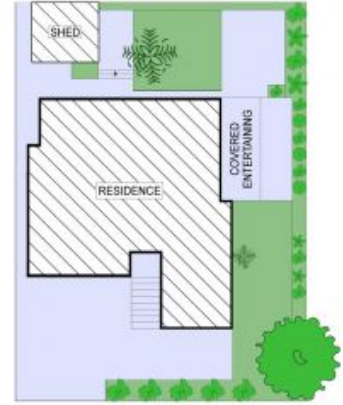
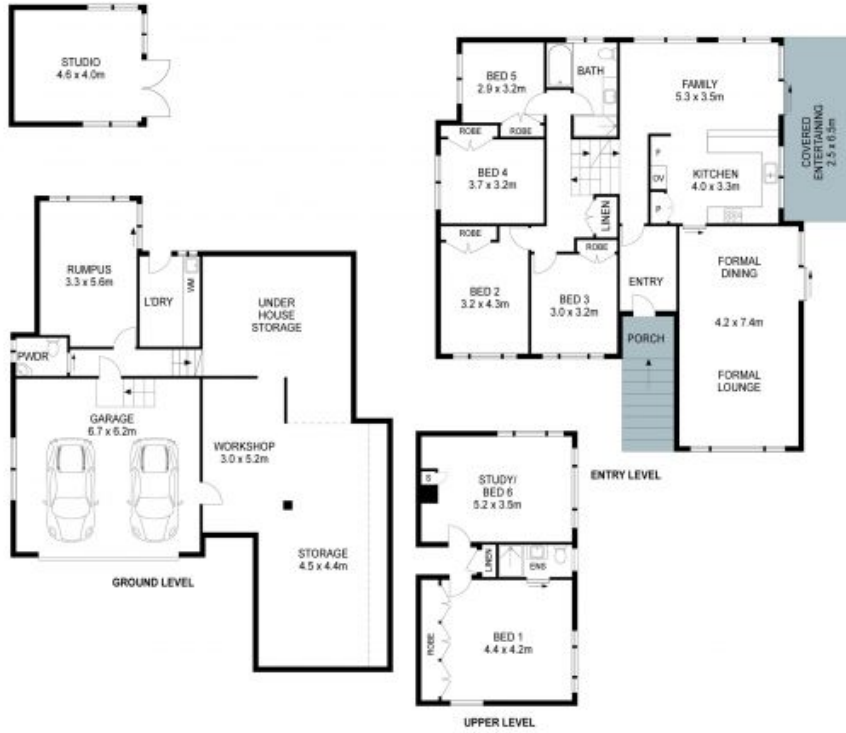


Leo Li

0404 917 188

20C Lyne Road, Cheltenham

6 2.5 2



THIS IS AN ARTIST'S IMPRESSION - ALL DIMENSIONS, LAYOUTS AND TREES ARE APPROXIMATE
ALL INTERESTED PARTIES SHOULD MAKE AND RELY ON THEIR OWN ENQUIRIES

