



3/35 East Esplanade Manly, NSW

2

1

2

Harbourfront apartment with postcard-perfect views

Positioned directly opposite Manly Cove Beach with dreamy views reaching down the harbour to The Eastern Suburbs, this bright and spacious security apartment is pure harbourfront bliss. Move straight in and live it up just footsteps from beaches, Manly Wharf and a smorgasbord of world-class bars, brasseries and restaurants.

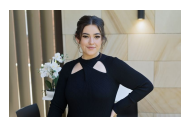
- Brand new quality renovation throughout
- Views over Manly Cove Beach and the harbour to Sydney Heads
- Ample living space and separate dining area reveal views through a picture window
- Sit back and gaze over 'The Office' from an oversized harbourside terrace that captures everchanging ocean scenes
- Brand new kitchen with dishwasher and plenty of storage
- Spacious bedrooms with ceiling fans and built in wardrobes
- Shared laundry with one other unit and space for your own machines
- Rare two large garages (note max height to garage area is 1.8m)

Price: Leased
Available Date: 07/11/2024



Anthony Zakos

9949 2822



Alicia Sudol

02 9949 2822



(NOT IN POSITION)



(NOT IN POSITION)



(NOT IN POSITION)



The floor plan is not to scale, measurements are indicative and in metres. Exterior elements are not in position. Plans should not be relied on. Interested parties should make and rely on their own enquiries. All other information provided has been collected from reliable sources but cannot be guaranteed for accuracy.

3/35 East Esplanade
Manly

STONE



The floor plan is not to scale; measurements are indicative and in metres. All features included in this 3D plan are for inspiration purposes only. This is not an exact replica of the property or the position of exterior elements. Plans should not be relied on. Interested parties should make and rely on their own enquiries.