



23 Manra Way Pacific Pines, QLD

4 

3 

4 

Elevated with panoramic views...

Wonderfully elevated with panoramic valley views of the setting sun and located near the pinnacle of Pacific Pines, this home is a delightful example of contemporary design, complemented by gentle summer breezes and a perfect aspect.

Spanning two generous levels that offer perfect privacy and separation, the 321m² (34.5 squares) open-plan configuration embraces easy living with its large, flowing spaces. The main living areas are beautifully proportioned, while separate entertainment rooms are discreetly tucked away, ensuring they don't intrude on the overall sense of boundless space.

...

- 2.8m gate entrance for trailer boat or caravan storage
- 4 spacious bedrooms: 3 upstairs and 1 downstairs for guests
- 3 living areas: family room, formal lounge, and first-floor kids' retreat
- Grand central staircase with a large walk-in cupboard underneath (study nook)

Inspect:

Saturday, 9th November 2024 12:00 - 12:30

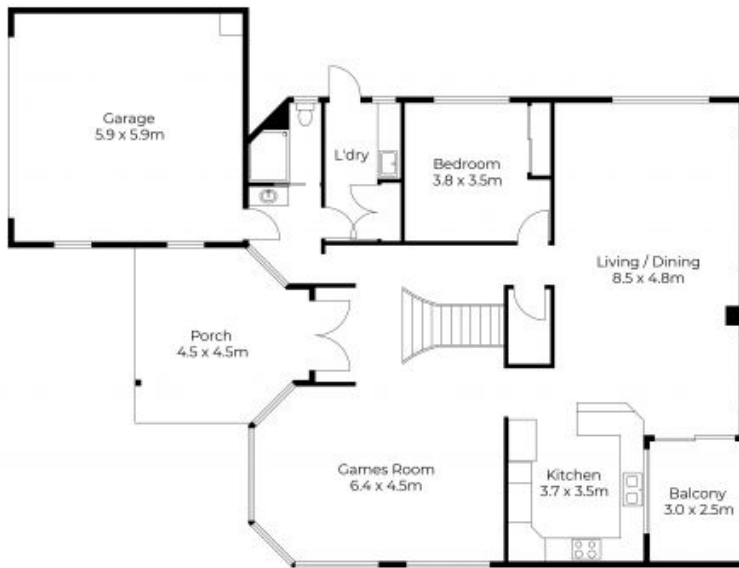
Price:

OFFERS WANTED

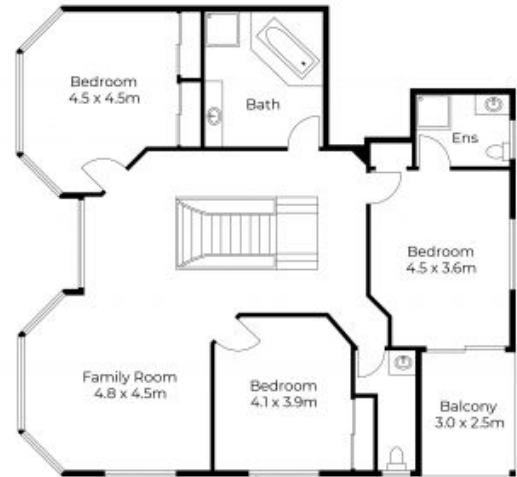


Andrew Colley

0488 217 803



Ground Floor



First Floor



Floor plans and site plans are for illustrative purposes only. They are not part of any legal document or title and are subject to errors, omission, and inaccuracies. Whilst every attempt has been made to ensure the accuracy of this plan, measurements of doors, windows, rooms, cupboards etc are approximate only.

APPROXIMATE AREA
LIVING AREA : 288m²
TOTAL AREA : 321m²