

STONE



G02/25 Campbell Street Parramatta, NSW

2

2

1

## Prime Position

This spacious two-bedroom apartment is located in the heart of Parramatta offering a lifestyle of comfort and convenience. Perfectly positioned on the ground floor of a well-maintained, secure block, you will find yourself close to all local amenities. Sitting directly across from Westfield Parramatta and only a moment's walk to bus services, Parramatta Station, Jubilee Park, Parramatta High School, Parramatta Public School, and "Eat Street" restaurants/cafes dining district.

- Modern gas kitchen with 40mm stone bench top, breakfast bar, stainless steel appliances & dishwasher
- Two generous bedrooms with built-in wardrobes, air conditioning, and both with access to separate private courtyards. The Master also has an ensuite bathroom.
- Open plan lounge & dining room with split system air conditioning and access to the courtyard
- Two fully tiled contemporary bathrooms
- Three separate courtyards
- Internal laundry
- Secure building with intercom.

**Inspect:**

Saturday, 9th November 2024 10:00 - 10:30

**Price:**

\$650,000 - \$700,000



**Aaron Lih**

0420 825 598



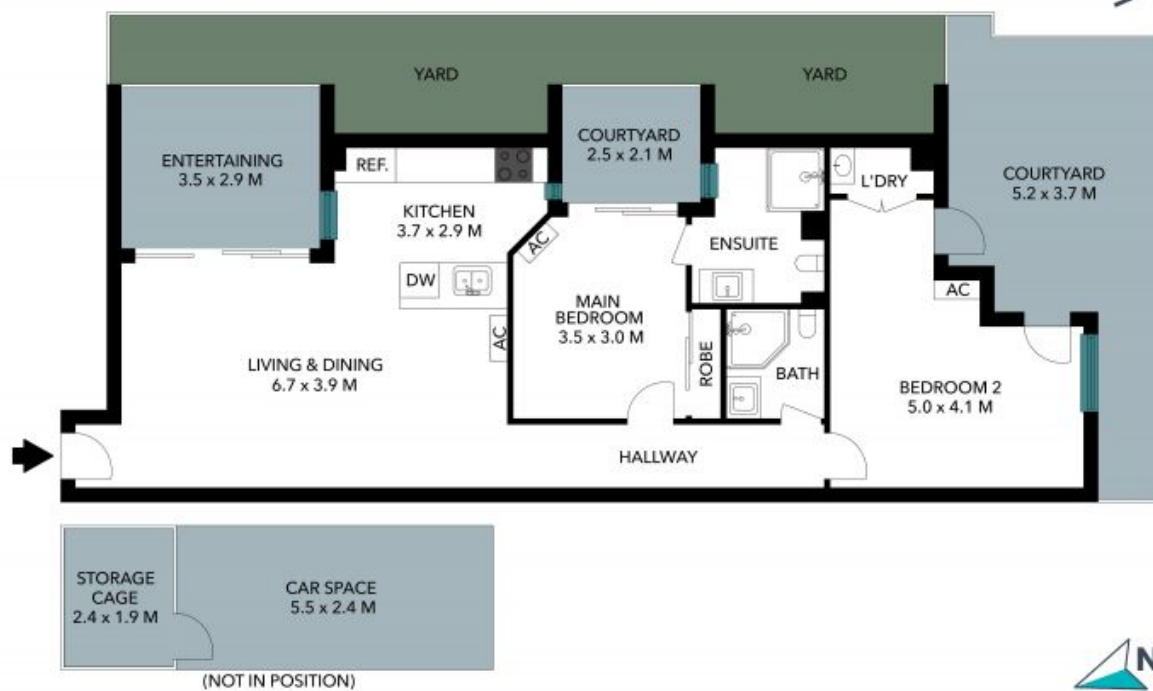
**Nicola Reilly**

0405 203 525



G02/25 Campbell Street  
Parramatta

STONE



The floor plan is not to scale; measurements are indicative and in metres. Exterior elements are not in position. Plans should not be relied on.  
Interested parties should make and rely on their own enquiries. All other information provided has been collected from reliable sources but cannot be guaranteed for accuracy.

G02/25 Campbell Street  
Parramatta

STONE



The floor plan is not to scale; measurements are indicative and in metres. All features included in this 3D plan are for inspiration purposes only. This is not an exact replica of the property or the position of exterior elements. Plans should not be relied on. Interested parties should make and rely on their own enquiries.