

STONE



509/904 Pacific Highway Gordon, NSW



## Spacious two bedroom in ideal Gordon location

Set on the fifth floor of the Vertice complex, this modern abode is sure to make an immediate impression with its generous design, quality inclusions and exceptional urban ease, making it a perfect home for families and entertainers.

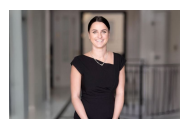
Features include:

- Light-filled living and dining spaces which open up to a generous and covered north-facing balcony, perfect for year-round entertaining
- Open plan, modern kitchen with gas cooking and island bench
- Two bedrooms, both with built-in wardrobes; Master bedroom with en suite and study nook
- Chic main bathroom with mirrored cabinet and ample storage; internal laundry
- Central heating/cooling throughout
- Security car space and storage cage
- Centrally located with easy access to Gordon village, bus stops and railway station
- Within Gordon West Public School and Killara High School catchments

Disclaimer: Stone Real Estate believes that this information is correct but does not warrant or guarantee the accuracy of the information. Certain information has been obtained from...

**Price:** \$725 per week

**Available Date:** 15/11/2024



**Natasha Amos**

0415 755 587



**Stephanie Ryan**

0451 307 760

[www.stonerealestate.com.au](http://www.stonerealestate.com.au)