



1204/41-45 Waitara Avenue Waitara, NSW



Premium One-bedroom Apartment in a Sought After Location

This private and peaceful one bedroom apartment is situated on level 2 of a well-maintained complex known as "Waldorf Waitara". It boasts light-filled interior, oversized entertainer's balcony with great green outlooks over the Mark Taylor Oval, tennis courts and children's playground.

It offers a relaxing and carefree lifestyle with an urban vibe in an enviably convenient park-side enclave with easy walks to bus stops, Waitara or Hornsby stations, parks, Westfield's abundance of shops and eateries, and Waitara Public School.

Features of the property include:

- Generously proportioned open plan layout in combined living and dining
- Seamless flow to entertainer's balcony with peaceful and private green outlook
- Abundance of natural light and relaxing vibe with large glass doors/windows

Price: \$550 Per week

Bond: \$2,200

Available Date: 01/11/2024

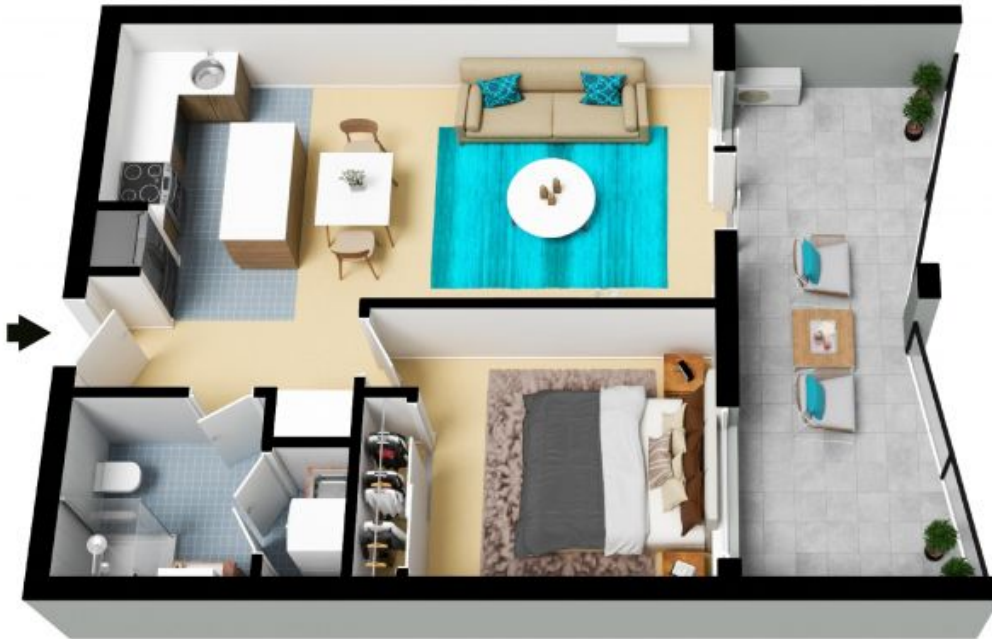


Brad Sargent

0413 773 423

1204/41-45 Waitara Avenue
Waitara

STONE



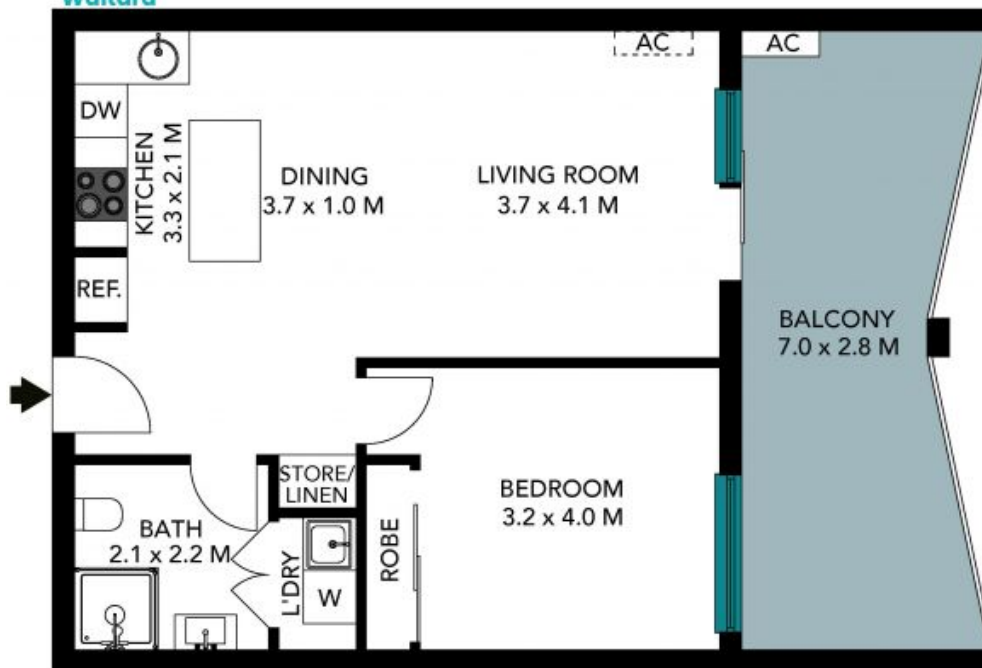
Internal Living: 51 sqm
External Living: 17 sqm
Total Living Area: 68 sqm



The floor plan is not to scale; measurements are indicative and in metres. All features included in this 3D plan are for inspiration purposes only. This is not an exact replica of the property or the position of exterior elements. Plans should not be relied on. Interested parties should make and rely on their own enquiries.

1204/41-45 Waitara Avenue
Waitara

STONE



(NOT IN POSITION)

Internal Living: 51 sqm
External Living: 17 sqm
Total Living Area: 68 sqm



The floor plan is not to scale, measurements are indicative and in metres. Exterior elements are not in position. Plans should not be relied on. Interested parties should make and rely on their own enquiries. All other information provided has been collected from reliable sources but cannot be guaranteed for accuracy.