



3 Kinmond Avenue Wavell Heights, QLD

4 

1 

1 

LMR Zoned Renovated Queenslander

Immaculately renovated this 1930s residence, where timeless character meets modern convenience yet LMR Zoned means your options are many! Situated on a generous 612sqm corner block, this home retains its original charm with characterful features, while offering contemporary updates throughout. With spacious interiors, stylish finishes, and ample outdoor space, it's the perfect blend of classic elegance and modern living.

- Large 612sqm corner block
- Recently renovated throughout
- LMR Zoned corner block (up to 3 stories of units S.TC.A)
- Updated bathroom
- Huge entertaining possibilities
- Side access
- Large under-house storage area
- Town gas connected

Price:

Offers over \$1,150,000



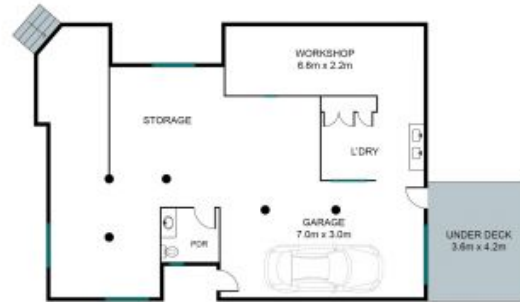
Tristan Rowland

0411 572 970

INTERNAL 240 SQM
EXTERNAL 53 SQM
TOTAL 293 SQM



LEVEL 2



LEVEL 1



Whilst every attempt has been made to ensure the accuracy of the floor plan contained here, measurements of doors, windows and rooms are approximate and no responsibility is taken for any error, omission or mis-statement. These plans are for representation purposes only.

3 Kinmond Avenue, Wavell Heights

Stoneaspley.com.au

