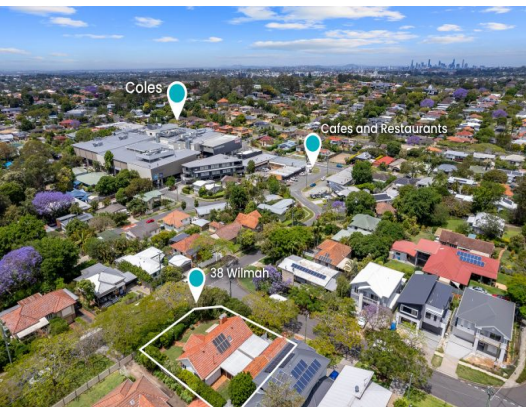


Granny Flat

STONE

Main Residence



38 Wilmah Street Aspley, QLD



Granny Flat + Immaculately Renovated Residence!

This lovingly kept and renovated home boasts a spacious 680sqm corner block and an intuitive floor plan that will suit families of all ages. Spanning one spacious level of living with a leafy green outlook, it's just moments from schools, shops, and parks-perfect for an active lifestyle.

- 680sqm corner block
- Renovated self-contained granny flat
- Solis 1.8kW solar system
- Custom electric gates
- Rich timber flooring throughout
- Fully enclosed fence line
- Water tank with electric pump
- Casement windows - rejuvenated with new hardware

Price:

Offers over \$1,400,000



Tristan Rowland

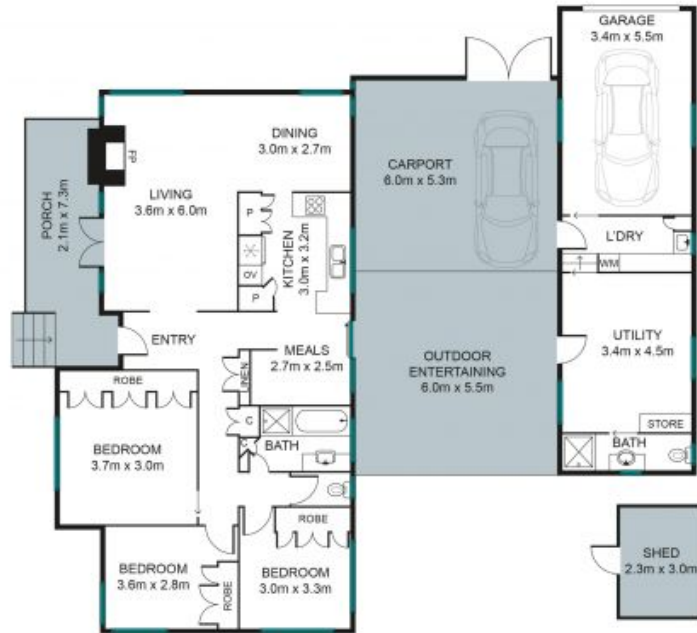
0411 572 970



Tristan Rowland

0411 572 970

INTERNAL 137 SQM
EXTERNAL 87 SQM
TOTAL 224 SQM



Whilst every attempt has been made to ensure the accuracy of the floor plan contained here, measurements of doors, windows and rooms are approximate and no responsibility is taken for any error, omission or mis-statement. These plans are for representation purposes only.

38 Wilmah Street, Aspley

Stoneaspley.com.au

