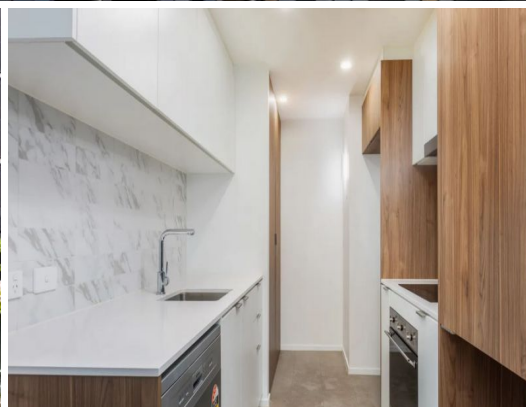


The logo for STONE real estate, featuring the word "STONE" in a bold, sans-serif font inside a white rectangular box with a stylized speech bubble tail pointing towards the bottom right.

715/15 Bowes Street Phillip, ACT



Be Quick!

This architecturally designed, light-filled one bedroom apartment seamlessly blends nature with modern sophistication. It features a kitchen equipped with high-quality appliances, expansive floor-to-ceiling double-glazed windows, smart space-saving storage solutions, and elegant finishes throughout. Residents can also enjoy access to luxurious resort-style amenities.

- Stunning kitchen featuring stone benchtops and dishwasher
- European-style laundry
- Split system air conditioning unit
- Located in Tower B, Level 7
- Floor-to-ceiling windows
- Resident infinity pool, gymnasium, function room, lounge, library
- Tranquil rooftop retreat with reflection pond
- Located moments to Westfield Woden, a short commute to the City

Price: \$450 per week

Available Date: 15/11/2024



Courtney Saddi

0474 066 235



Kerry Robinson

0439 882 499