



36 Mary Kitson Street Watson, ACT



## A rare offering for rent in Watson!

Discover the perfect family retreat at 36 Mary Kitson Street, Watson. This single-level home offers an exceptional combination of comfort, convenience, and a prime location near the peaceful Watson Woodlands and Fitzroy Pavilion. It's an ideal choice for families looking for both space and a serene environment.

Inside, the home boasts four bedrooms, with the main bedroom offering a luxurious walk-in robe and ensuite. The three additional bedrooms are equipped with built-in robes, providing plenty of storage. The formal front living room creates a welcoming space for guests, while the separate family room seamlessly connects to the dining area and kitchen, offering an open and inviting atmosphere for family gatherings or entertaining.

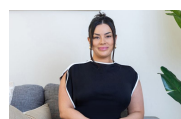
...

- Four bedrooms, main with ensuite and walk-in robe.
- Covered patio, grassed backyard.

**Price:** \$800 per week

**Bond:** \$3,200

**Available Date:** 21/10/2024



**Tahlia Dal Broi**

0434 551 711



**Jess Campbell**

0439 882 499



The site plan and floor plan are not to scale; measurements are indicative and in metres. Bushes and trees are placed for illustration purposes. Plans should not be relied on. Interested parties should make and rely on their own enquiries. All other information provided has been collected from reliable sources but cannot be guaranteed for accuracy.



36 Mary Kitson Street  
Watson



The floor plan is not to scale; measurements are indicative and in metres. All features included in this 3D plan are for inspiration purposes only. This is not an exact replica of the property or the position of exterior elements. Plans should not be relied on. Interested parties should make and rely on their own enquiries.