

32A Archbold Road Roseville, NSW

3

2

2

### Charming two storey full brick home

This charming, character-filled home sits on the high side of Archbold Road, offering privacy and tranquility. Surrounded by lush, leafy gardens, it provides a peaceful retreat with timeless appeal. The elevated position adds a sense of space and light, making it an ideal choice for those seeking a serene lifestyle in a prime location.

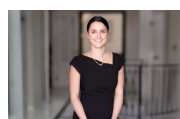
Features:

- Bright modern kitchen with stainless steel appliances and gas cooktop
- Formal lounge and light filled sunroom
- Spacious family room and separate casual dining
- Three generous sized bedrooms with build in wardrobes
- Modern family bathroom with separate bath and shower
- Second bathroom with laundry space
- Double lock up garage
- Within catchment zone for Killara High School and Roseville Primary School.

**Inspect:** Saturday, 19th October 2024 12:00 - 12:15

**Price:** \$1050 per week

**Available Date:** 23/10/2024



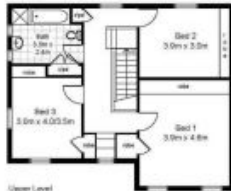
**Natasha Amos**

0415 755 587



**Stephanie Ryan**

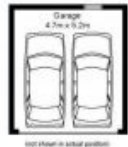
0451 307 760



Upper Level



Ground Level



(not shown in actual position)



Lower Ground Level

**32a Archbold Rd, ROSEVILLE**  
 Total Approx. Internal Floor Area: 180sqm  
 Disclaimer: Plans shown are for presentation purposes and are not intended  
 as a contract document. All measurements are approximate.