



Photo taken from back deck.



198 Rode Road Wavell Heights, QLD



Champagne on a beer budget

Set on a 683sqm block, this property offers sweeping views of the city skyline and Mt Coot-tha, providing an idyllic backdrop for everyday living. With its solid construction and timeless appeal, this home presents a rare opportunity to secure a prime piece of real estate in a highly desirable location.

- Large 683sqm block
- City and Mt Coot-tha views
- North/South facing aspect
- Fronius 24v panel solar system
- 3 x storage rooms
- 2 x Eufy keyless entry system
- Ultimate entertaining possibilities
- Moments from bike paths, parks, and shops-perfect for an active lifestyle.

Price:

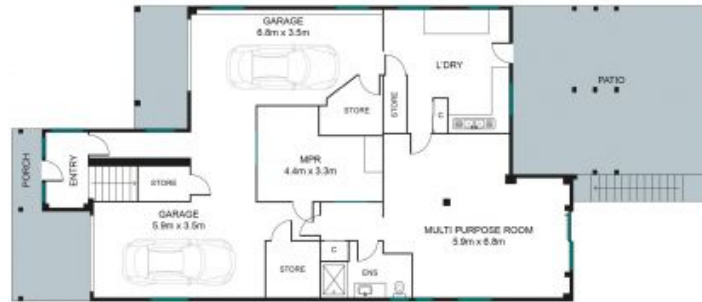
For Sale Now



Tristan Rowland

0411 572 970

INTERNAL 270 SQM
EXTERNAL 114 SQM
TOTAL 384 SQM



Whilst every attempt has been made to ensure the accuracy of the floor plan contained here, measurements of doors, windows and rooms are approximate and no responsibility is taken for any error, omission or mis-statement. These plans are for representation purposes only.

198 Rode Road, Wavell Heights

Stoneaspley.com.au

