

STONE



19/12-14 Belinda Place Mays Hill, NSW

2

2

1

Modern Apartment in Cul-de-sac Location

Perfectly positioned within a tree-lined cul-de-sac, this modern apartment complex boasts unparalleled accessibility to key amenities. Within minutes to the M4 motorway, Westfield Parramatta, Westmead hospital, popular local schools and public transportation, this home is the perfect fusion of convenience and style.

- Two generously sized bedrooms with mirrored built-in wardrobes, master features an ensuite and access to the balcony.
- Large contemporary kitchen with gas cooking, stainless steel appliances, dishwasher, pantry, stone benchtops and breakfast bar
- Open plan living and dining area with split system air-conditioning
- Downlights and tiled flooring featured throughout
- Sleek bathrooms with floor to ceiling tiling, modern vanities and bath tub to main
- European style internal laundry with dryer
- Covered entertainers balcony welcoming loads of natural light
- Security intercom system and lift access

Inspect:

Saturday, 19th October 2024 12:15 - 12:45

Price:

\$580,000 - \$620,000



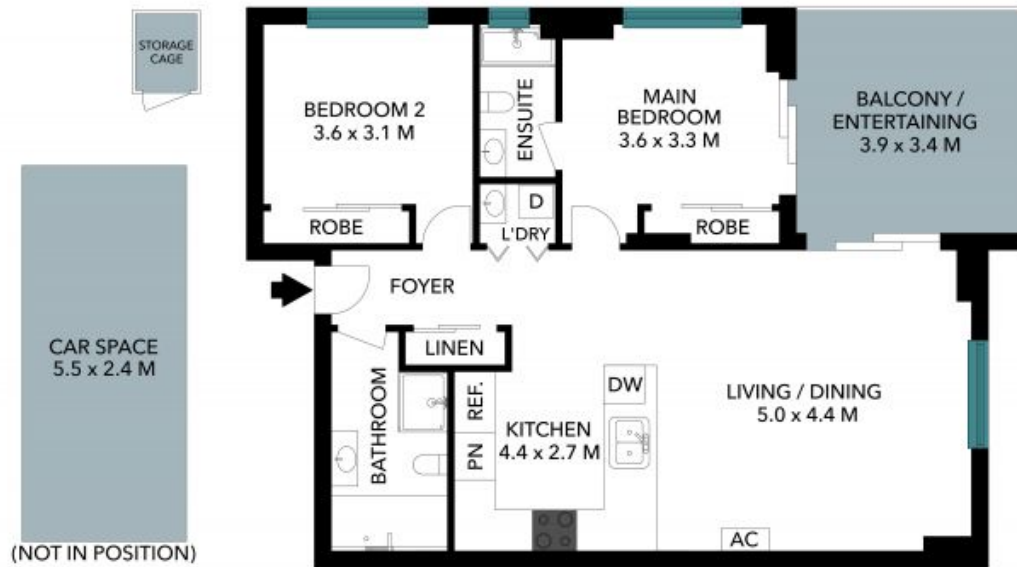
Aaron Lih

0420 825 598



Nicola Reilly

0405 203 525



The floor plan is not to scale; measurements are indicative and in metres. Exterior elements are not in position. Plans should not be relied on. Interested parties should make and rely on their own enquiries. All other information provided has been collected from reliable sources but cannot be guaranteed for accuracy.

19/12-14 Belinda Place
Mays Hill

STONE



The floor plan is not to scale; measurements are indicative and in metres. All features included in this 3D plan are for inspiration purposes only. This is not an exact replica of the property or the position of exterior elements. Plans should not be relied on. Interested parties should make and rely on their own enquiries.