



Belimbla Park, NSW

3 2 10

Acerage living

This property delivers endless opportunity for those who love and enjoy outdoor living.

Location is everything and this property ticks that box, situated in one of the very popular suburb of Belimbla Park.

The home offers three bedrooms, large living space, functional floorplan and fireplace.

If you're looking for that next step in semi rural living, look no further!

- > 8,445m2
- > Pool
- > Extensive storage
- > Ample garage/shed facilities
- > School catchment: The Oaks public school
- > School catchment: Camden High School
- > Privacy

Price: Contact Agent

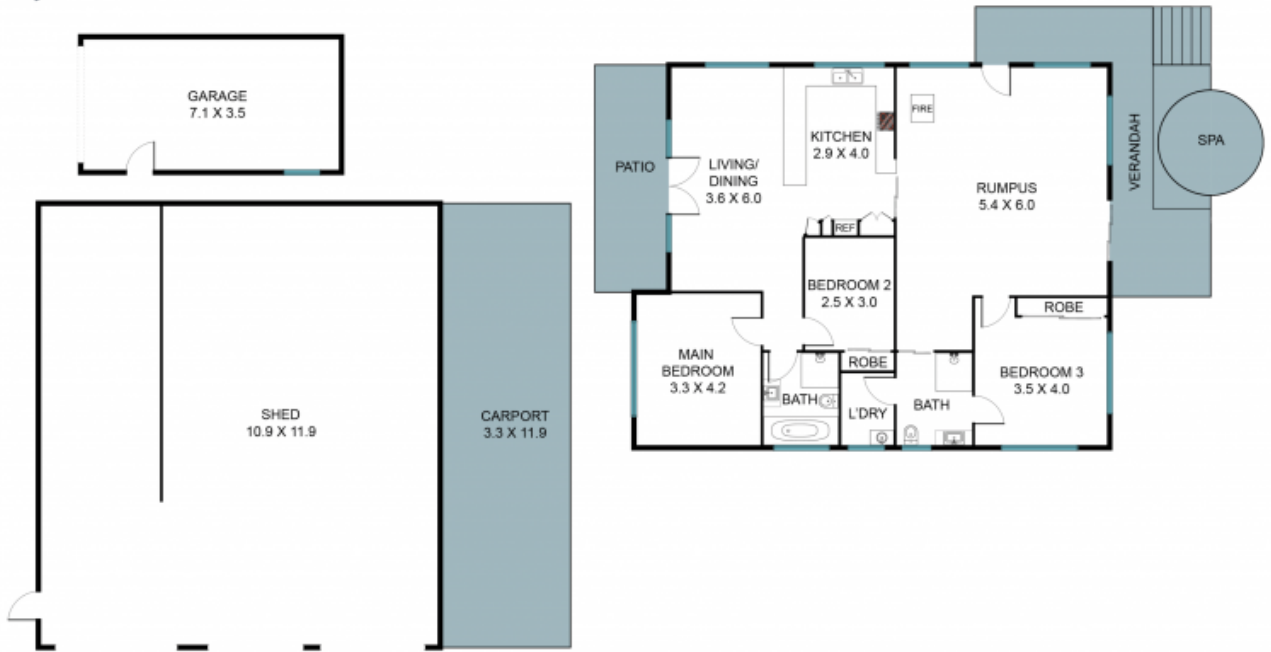


Chris York  
0405 434 414



Adriana Hayek  
0421 162 855

**STONE**



**109 Binalong Rd, Belimbla Park NSW 2570**



The floor plan is not to scale, measurements and in metres. Exterior elements are not in position.  
Plans should not be relied on. Interested parties should make and rely on their own enquiries.  
All other information provided has been collected from reliable sources but cannot be guaranteed for accuracy.