

105/230 Flemington Road Harrison, ACT



Modern charm with open-plan layout and functionality.

Viewings available by private inspection - please contact Sam Dyne on 0488 689 525 or at samdyne@stonerealestate.com.au to arrange an inspection time.

Step into this inviting residence and immerse yourself in its modern charm and functionality. Inside, the open-plan living and dining area welcomes you with a spacious layout, creating a versatile space for everyday living and entertaining. The parallel kitchen layout enhances convenience and efficiency, while ample storage throughout the home ensures practicality. The European laundry adds to the home's functionality, and a split-system in the living area provides year-round comfort, complemented by the warmth of carpet flooring.

Venture outside to discover your outdoor oasis. The balcony offers a private escape where you can enjoy your morning coffee or soak in the views, making it the perfect spot for relaxation.

Located in the sought-after area of Harrison, this residence beautifully combines indoor comfort with outdoor enjoyment. Experience modern living at its finest, with thoughtful design and an abundance of amenities, creating the ideal setting for lasting memories with fa...

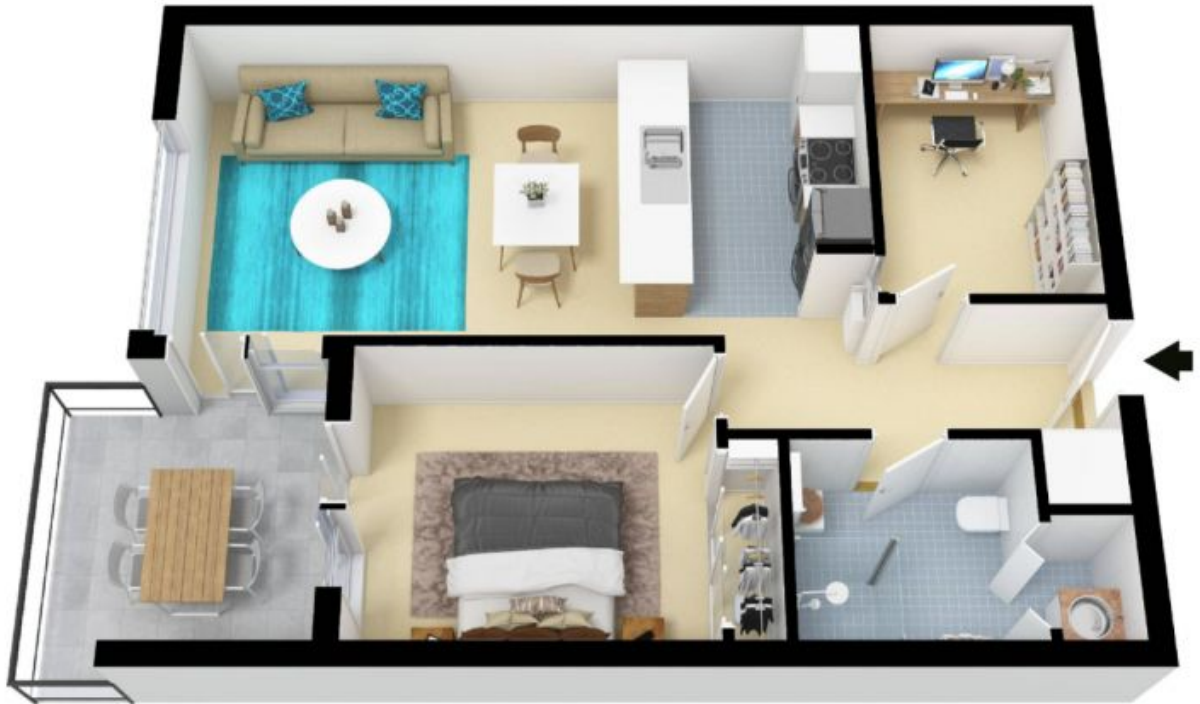
Price:

\$420,000+



Sam Dyne

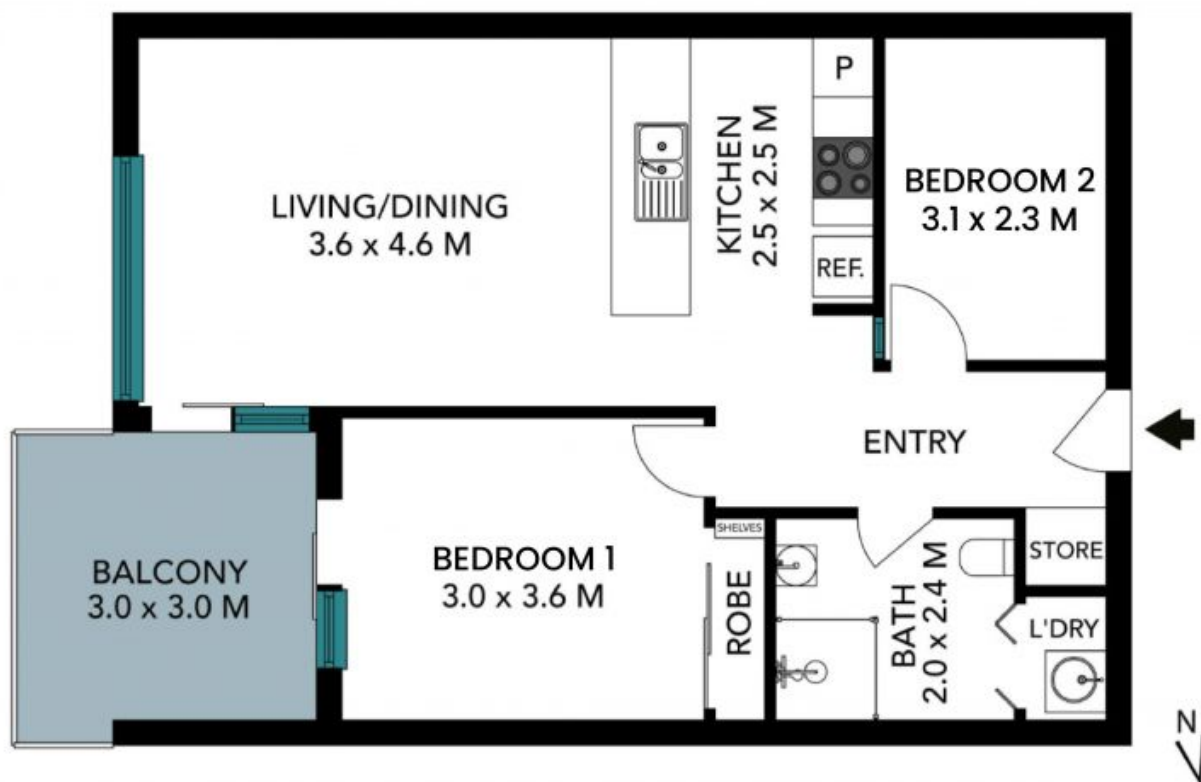
0488 689 525



The floor plan is not to scale. Measurements are indicative and in metres. All features included in this 3D plan are for inspiration purposes only. This is not an exact replica of the property or the position of exterior elements. Plans should not be relied on. Interested parties should make and rely on their own enquiries.

105/230 Flemington Road, Harrison





The floor plan is not to scale, measurements are indicative and in metres. Exterior elements are not in position. Plans should not be relied on. Interested parties should make and rely on their own enquiries. All other information provided has been collected from reliable sources but cannot be guaranteed for accuracy.

105/230 Flemington Road, Harrison

STONE