



1/275 Pittwater Road Manly, NSW

2 

1 

## Spacious two bedroom apartment in Manly

Situated above Manly's Croquet Club is this updated two bedroom apartment featuring a large entertaining balcony with views over the park.

- Spacious combined lounge dining room
- Large balcony with views over the park
- Two double sized bedrooms
- Full bathroom with combined laundry facilities (tenant to provide own machine)
- Neat kitchen with modern appliances
- Storage room downstairs

**Inspect:** Saturday, 19th October 2024 12:00 - 12:15

**Price:** \$850 per week

**Bond:** \$3,400

**Available Date:** 02/11/2024



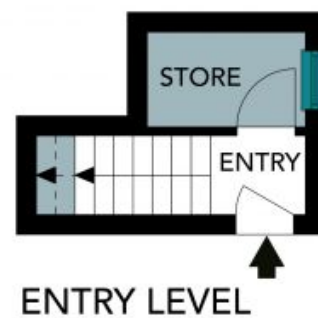
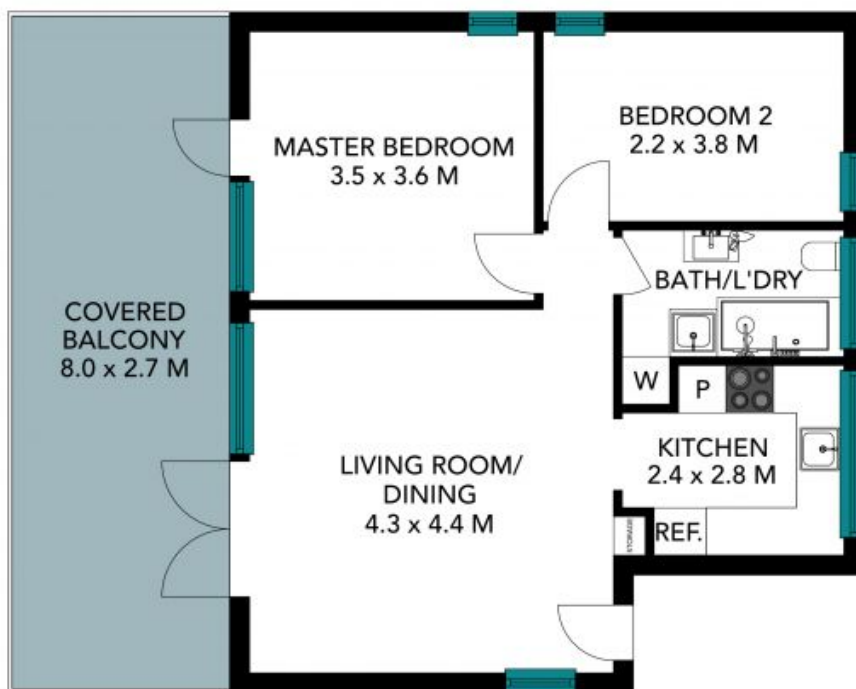
**Michael Egan**

0499 172 009



**Rodney Scurrall**

0499 268 455



## MAIN LEVEL

The floor plan is not to scale. Measurements are indicative and in metres. Solarium elements are not to position. Plans should not be relied on. Interested parties should make and rely on their own enquiries. All other information provided has been collected from reliable sources but cannot be guaranteed for accuracy.

1/275 Pittwater Rd, Manly







MAIN LEVEL



ENTRY LEVEL

The floor plan is not to scale, measurements are indicative and in metres. All features included in this 3D plan are for inspiration purposes only. This is not an exact replica of the property or the position of exterior elements. Plans should not be relied on. Interested parties should make and rely on their own enquiries.



1/275 Pittwater Rd, Manly

