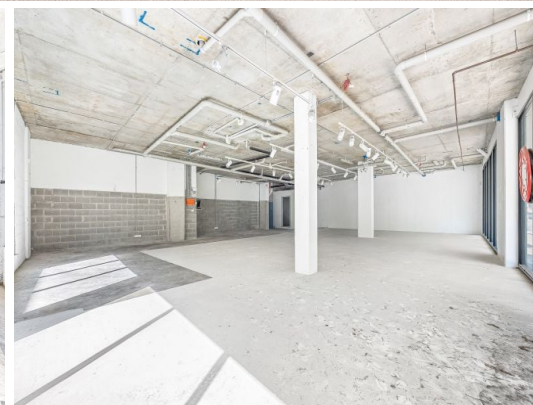
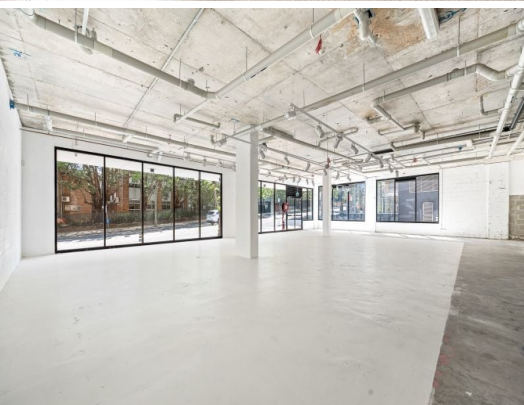


STONE



2/319-321 Pacific Highway North Sydney, NSW

25 METER CORNER FRONTAGE - OFFICE / RETAIL / MEDICAL SPACE (STCA) IN NORTH SYDNEY

- ? EXCELLENT PACIFIC HIGHWAY EXPOSURE
- OPEN FLOOR PLAN
- HIGH CEILINGS
- IDEAL FOR OWNER OCCUPIERS AND INVESTORS
- SECURE EXCLUSIVE USE CAR SPACE
- 600M WALK TO VICTORIA CROSS METRO STATION

- 211sqm on title
- Floor to ceiling windows
- Enormous 25m street frontage and exposure

Price: Contact Agent
Council Rates: \$1,245.00 p/q
Water Rates: \$171.00 p/q
Strata Rates: \$5,615.00 p/q



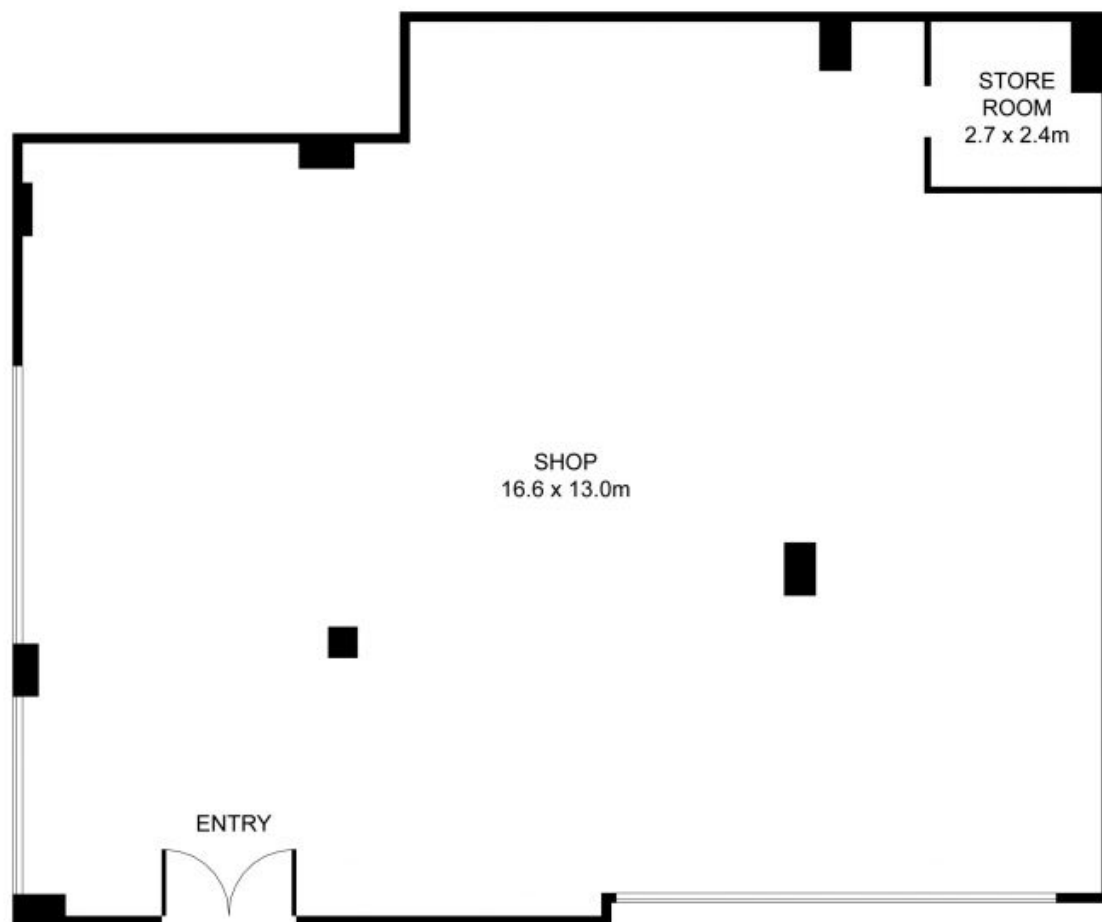
George Spiroglou

0420 303 303



Adrian Vassallo

0406 484 994



NOT IN POSITION



2/319-321 Pacific Highway, North Sydney

DISCLAIMER: PLANS SHOWN ARE FOR PRESENTATION PURPOSES AND ARE NOT PART OF ANY LEGAL DOCUMENT. ALL MEASUREMENTS AND FIGURES ARE APPROXIMATE.