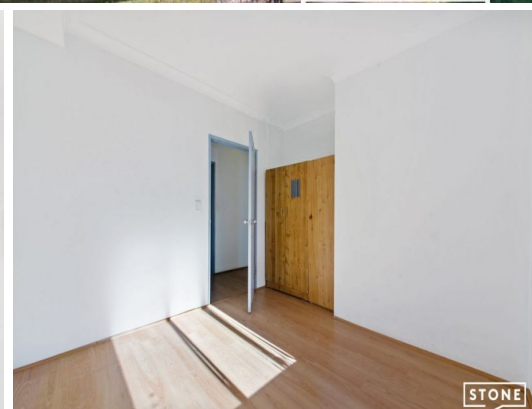


STONE



6/16 Newman Street Merrylands, NSW

2 

1 

1 

2 Bed Apartment in Prime Location

This sunny, elevated 2 Bedroom Apartment is perfectly situated in a convenient location. Set within a small secure complex, you will be within 10 minutes' walk to Stockland shopping centre, Merrylands bowling club, Merrylands RSL club, train station, library and local parks.

- Spacious bedrooms with built-in robe to the master
- Combined living and dining room with air-conditioner
- Modern gas kitchen with ample cupboard space and stainless steel appliances
- Main bath with separate tub and shower
- Internal laundry with additional guest toilet
- Entertainers balcony
- Updated flooring throughout
- Oversized lock up garage

Inspect:

Saturday, 19th October 2024 1:00 - 1:30

Price:

Just Listed



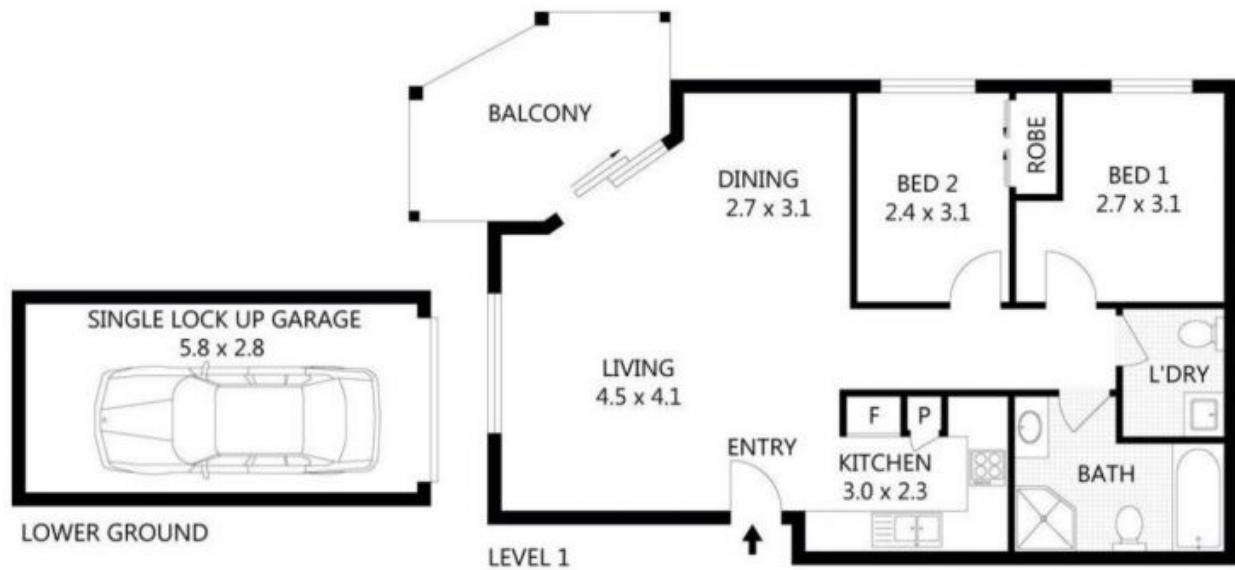
Ashton Beukers

0410 591 789



Brittany Beukers

0405 670 411



Scale in metres. Indicative only. Dimensions are approximate. All information contained herein is gathered from sources we believe to be reliable. However we cannot guarantee its accuracy and interested parties should rely on their own enquiries.

RESIDENCE - 66m²
GARAGE - 16m²
TOTAL AREA - 82m²



Unit 6/16-18 Newman Street, Merrylands