



26 Goolagong Place Menai, NSW

5

2

2

Spacious and flexible family living and entertaining

This contemporary family home with a captivating bush outlook offers flexible and functional living. Ideal for families and entertaining, it features two spacious living areas, a private backyard with an alfresco dining, an inground swimming pool and a covered cabana area with a projector screen. Nestled in a quiet cul-de-sac, it's conveniently located close to local schools, shops & Menai central.

- Open plan, light-filled, spacious main living and dining with split system a/c
- Good size second upstairs living area with split system a/c, large attic storage
- Generous electric kitchen w/dishwasher, lots of bench space and casual dining
- Four bedrooms, optional fifth bedroom/study, three w/built-ins, main w/ensuite
- Under-stair storage, landscaped gardens, solar panels, north facing aspect
- Impressive alfresco dining, inground swimming pool, cabana with projector screen
- Double garage w/internal access, extra parking in front, garden shed, side access
- Family-friendly location easily accessible to local schools, buses and Menai Central

Inspect: Saturday, 19th October 2024 11:00 - 12:00
Wednesday, 23rd October 2024 5:00 - 5:30
Auction: 09/11/2024 09:15 am

Price: Auction
Council Rates: \$357.42 p/q



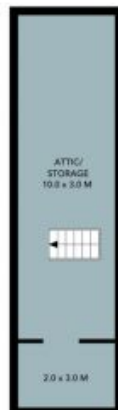
Neil McNamara

0432 972 027



Kiran Menon

0409 278 346



Attic Floor



First Floor



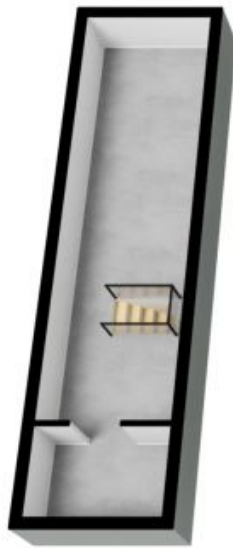
Ground Floor



The floor plan is not to scale; measurements are indicative and in metres. Exterior elements are not in position. Plans should not be relied on. Interested parties should make and rely on their own enquiries. All other information provided has been collected from reliable sources but cannot be guaranteed for accuracy.

26 Goolagong Place
Menai

STONE



Attic Floor



First Floor



Ground Floor



The floor plan is not to scale; measurements are indicative and in metres. All features included in this 3D plan are for inspiration purposes only. This is not an exact replica of the property or the position of exterior elements. Plans should not be relied on. Interested parties should make and rely on their own enquiries.