



55 Buller Street Everton Park, QLD 3  1  2 

Family home with Position and Potential

This home is set on an elevated block, in a quiet and peaceful street just a short stroll from every convenience including sports fields, playgrounds and parkland including kedron brook bikeway. Only minutes' walk from dining at the Lane Way at Everton Park or Brookside shopping centre and close proximity to public transport options. This tidy home will fulfil the family's needs.

- Low maintenance 506sqm block with Lmr2 Low-Medium Density Residential
- Incredible potential
- Hardwood timber frame and flooring
- 2.7m high ceilings throughout
- Large 6x3m Shed/workshop
- Fully fenced pet friendly yard with side access
- Close to Shops, Schools and public transport
- Everton Park State School & Everton Park State High School catchments

This home offers:

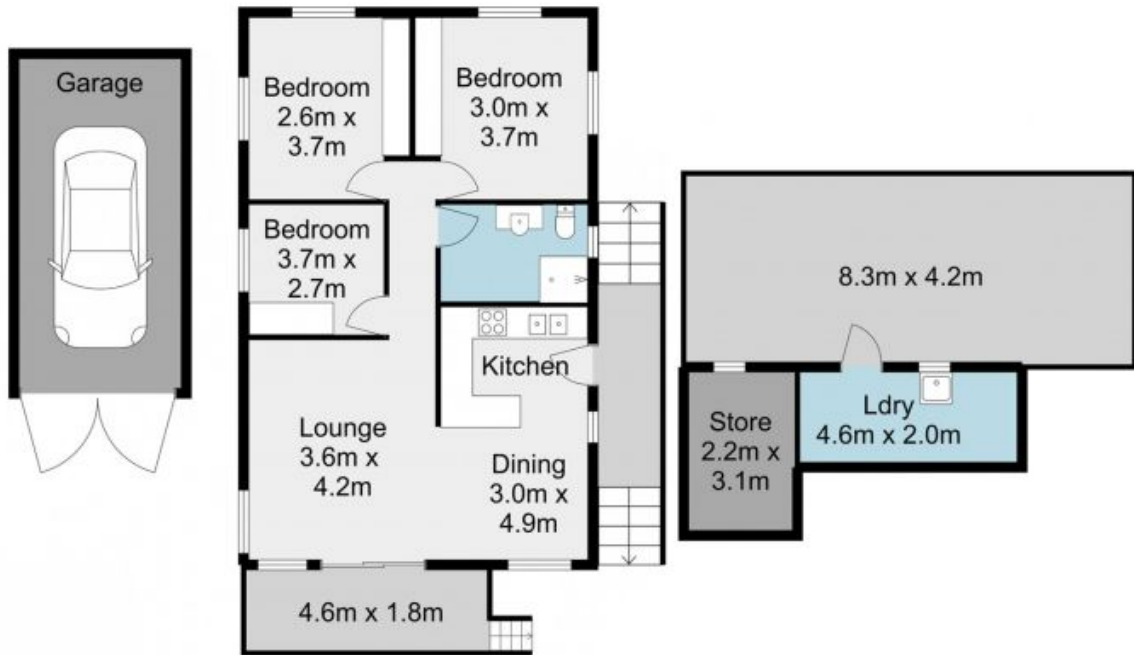
Price: For Sale Now



John Bradley
0410 454 718



Matthew Biggs
0499 498 988



The site plan and floorplan are not to scale, measurements are indicative and in metres. Bushes and trees are placed for illustration purposes. Plans should not be relied on. Interested parties should make and rely on their own enquiries.

55 Buller Street, Everton Park

stonesplay.com.au