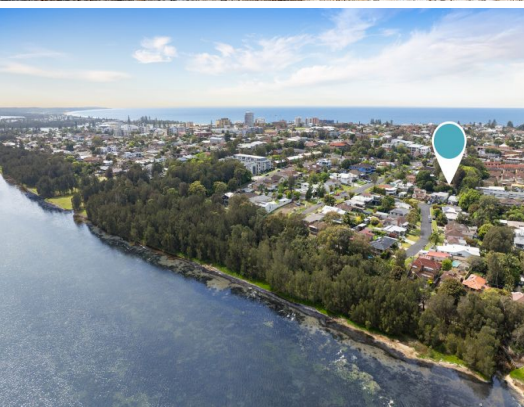


STONE



4/19 Norfolk Street The Entrance, NSW

3

2

2

Serene Lakeside Living

Discover the epitome of serene living in this ultra-private townhouse, perfectly positioned at the rear of a small complex of four. Nestled by the lake, this residence offers a tranquil escape while being just moments away from the vibrant lifestyle the Central Coast has to offer, including pristine beaches, local shops, popular cafes and sought-after restaurants.

Enjoy peace and privacy in your own slice of paradise, making it feel like a world away despite having all amenities at your fingertips. Experience the ultimate lifestyle in this remarkable townhouse, where comfort and tranquility meet the best of lakeside living....

Property Highlights: ...

- Private position in convenient locale, walk to lake.
- 3 bedrooms with built-in robes.
- Master suite boasts ensuite.
- Open plan living & dining area.

Inspect:

Saturday, 19th October 2024 1:15 - 1:45

Price:

\$750,000



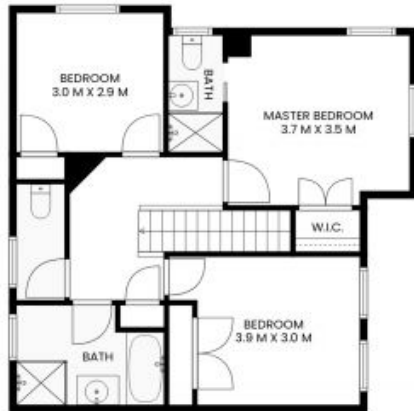
Alyce Lewis

0423 950 626



Alyce Lewis

0423 950 626



FLOOR 2



FLOOR 1

INTERNAL: 99sqm
EXTERNAL: 40sqm

PLEASE NOTE: These Floorplan + Site Plans have been generated for marketing purposes and are to be used as a guide only. While all care is taken, no guarantee can be given in respect of accuracy; sizes and dimensions are approximate, actual may vary.

