

STONE



22/136-140 Bridge Road Westmead, NSW

2

2

1

## Recently Renovated Apartment

A great opportunity for those looking for a First Home, Investment or Apartment living. This two bedroom unit has been freshly painted, near new cooktop as well as new wooden floorboards. Set in an ideal location close to Local Schools, parks, Westmead Public & Private hospitals, public transport including both Wentworthville and Westmead Train Station and upcoming light rail & Metro.

- Modern Kitchen with Stone Benchtops and Stainless Steel Appliances + Gas Cooking
- Open plan living & dining area with Split System Air Conditioner
- Two Bedrooms with Built In Robes, Main Bedroom with Ensuite & Private Balcony
- Internal Laundry & Secure Single Carspace

**Inspect:**

Saturday, 19th October 2024 11:00 - 11:30

**Price:**

Contact Agent

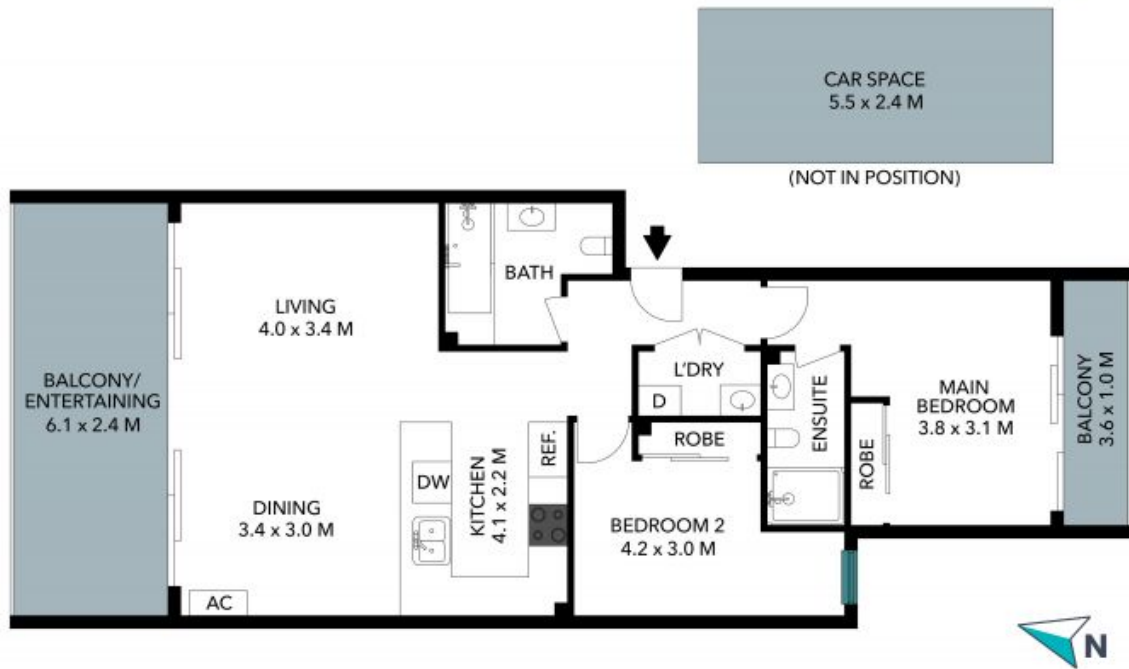


**Simar Gill**

0410 312 242

22/136-140 Bridge Road  
Westmead

STONE



The floor plan is not to scale; measurements are indicative and in metres. Exterior elements are not in position. Plans should not be relied on.  
Interested parties should make and rely on their own enquiries. All other information provided has been collected from reliable sources but cannot be guaranteed for accuracy.



22/136-140 Bridge Road  
Westmead

STONE



The floor plan is not to scale; measurements are indicative and in metres. All features included in this 3D plan are for inspiration purposes only. This is not an exact replica of the property or the position of exterior elements. Plans should not be relied on. Interested parties should make and rely on their own enquiries.