

270 Mandalay Circuit Beveridge, VIC

4 2 2

**Packed with wow factor!**

This custom-built family home is packed with wow factor! Freshly painted and ready to impress, it's set up for fun, function, and endless family moments.

Step into the heart of the home? a jaw-dropping kitchen with a massive 4-metre, 60mm stone island bench that's perfect for everything from family breakfasts to Friday night get-togethers. The large walk-in butler's pantry adds that extra touch of convenience, keeping everything organized and out of sight.

But the excitement doesn't stop there. Outside, the sprawling deck invites you to dive into the swim spa, while the second decked area with a cozy hut screams for BBQs and weekend hangouts. And with the huge side access, there's all the room you need for the caravan or boat, ready for your next family adventure.

Features-

- Large block with double gated side access
- Composite decking

**Inspect:** Saturday, 19th October 2024 3:15 - 3:45

**Price:** \$785,000 - \$835,000



**Jenni Ter Haar**

0438 130 473

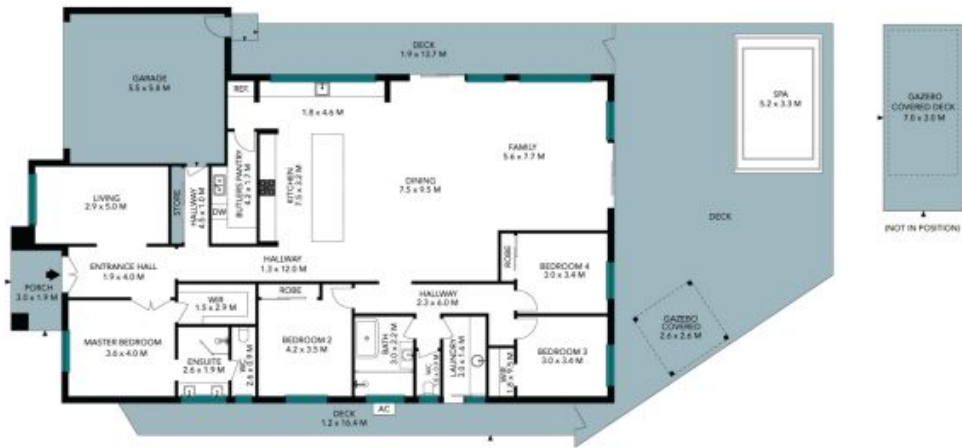


**Jenni Ter Haar**

0438 130 473



Site Plan



The site plan and floor plan are not to scale; measurements are indicative and in metres. Bushes and trees are placed for illustration purposes. Plans should not be relied on. Interested parties should make and rely on their own enquiries. All other information provided has been collected from reliable sources but cannot be guaranteed for accuracy.





The floor plan is not to scale; measurements are indicative and in metres. All features included in this 3D plan are for inspiration purposes only. This is not an exact replica of the property or the position of exterior elements. Plans should not be relied on. Interested parties should make and rely on their own enquiries.