



106-116 Epsom Road Zetland, NSW

Modern Sydney living in Zetland

Step outside to vibrant cafes, premier sporting venues, luxury shopping, pristine beaches, and Sydney's sparkling harbour. Come home to your architecturally designed sanctuary, created in collaboration with leading architectural studios. With four uniquely designed buildings in the award-winning Green Square precinct, enjoy the perfect blend of excitement and tranquillity.

- Bedrooms to be laid with select quality carpet
- Spacious living areas with timber flooring and led downlights
- Elegant kitchen with stone benches, smeg appliances and ducted rangehood
- Hidden split system air conditioning
- 3 min walk to Gunyama Park Aquation
- 7 min walk to East Village Shopping
- 8 min walk to Green Square Station
- Surrounded by universities, USYD, UNSW, UTS

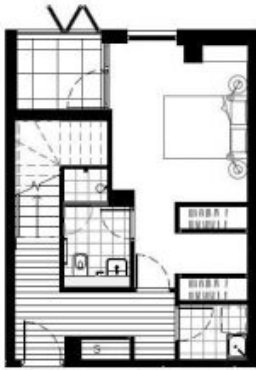
Studio from \$545,000
 1 bed from \$690,000
 2 bed from \$965,000

Price: Start From \$545,000

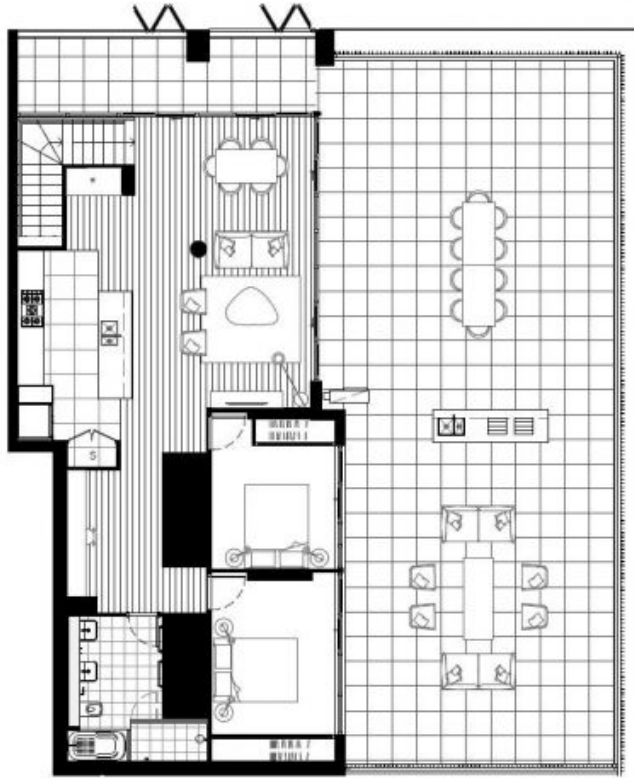


Ivan Gunawan

0421 032 760



Level 7



Level 8

- * Retractable Sink Mixer included
- * 900mm Cooktop and Oven included
- * Integrated Fridge included
- * 2 Tone Robe included
- * Dry Bar included
- * Stone Bench Study and Joinery included
- * Bathroom with Double Basin included

BUILDING B

APT.
B 7.15

3
 2

TOTAL	272
INTERNAL	140
EXTERNAL	132

106 - 116 EPSOM ROAD ZETLAND, NSW

Updated 28th November 2021. This plan is a guide only and does not constitute an offer or contract. Please note that changes may be made to the development during construction and without notice. The design, layout, fixtures and fittings are subject to change without notice. All prices are estimates and do not include GST. All prices are subject to change without notice. All prices are estimates and do not include GST. All prices are subject to change without notice.