



313/10 Village Place Kirrawee, NSW

2 2 1

Luxe living in the heart of South Village

This modern third-floor apartment offers expansive views of local waterways and city skyline glimpses. Boasting an open-plan living area, a gourmet kitchen with Smeg appliances and two designer bathrooms, it combines comfort and style. Right in the heart of South Village, enjoy the convenience of dining, shopping and transport just steps away, making this property the perfect blend of luxury and convenience.

- North-facing balcony offering abundant sunlight, ideal for relaxing or entertaining
- Light-filled, open-plan living and dining areas with high ceilings and modern finishes
- Gourmet kitchen equipped with premium Smeg appliances and stone benchtops
- Two designer bathrooms featuring sleek finishes and a full ensuite to the main bedroom
- Spacious bedrooms complete with built-in robes
- Secure parking space and storage cage, plus convenient European laundry
- Close to dining, shopping and transport options in the heart of South Village
- Community facilities including an outdoor cinema, barbecue area and playground

Inspect: Saturday, 19th October 2024 11:15 - 11:45
 Tuesday, 22nd October 2024 11:15 - 11:45

Price: For sale - \$785,000 - \$860,000
Council Rates: \$381.45 p/q
Water Rates: \$172.79 p/q
Strata Rates: \$1,381.25 p/q



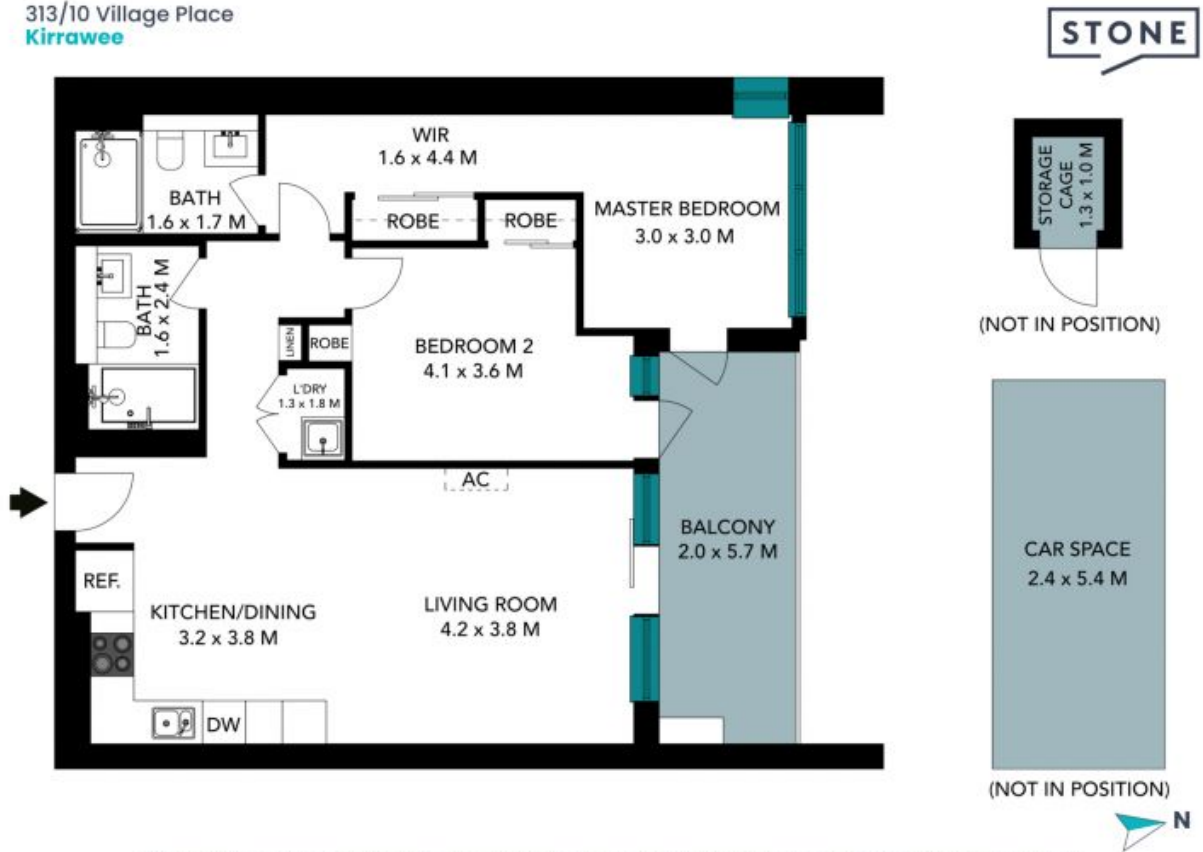
Lora Moore

0418 455 050



Kiran Menon

0409 278 346



The floor plan is not to scale; measurements are indicative and in metres. Exterior elements are not in position. Plans should not be relied on. Interested parties should make and rely on their own enquiries. All other information provided has been collected from reliable sources but cannot be guaranteed for accuracy.

313/10 Village Place
Kirrawee



The floor plan is not to scale; measurements are indicative and in metres. All features included in this 3D plan are for inspiration purposes only. This is not an exact replica of the property or the position of exterior elements. Plans should not be relied on. Interested parties should make and rely on their own enquiries.