

711/10 Village Place Kirrawee, NSW



North-facing designer apartment with stunning views

Capturing the stunning city skyline plus expansive views of waterways from Botany Bay to Cronulla, while enjoying a premier north-facing aspect. This sun-drenched 7th floor apartment promises a lifestyle of exceptional comfort and convenience. The spacious interiors are beautifully appointed with high-end finishes. Situated in the heart of South Village, you'll enjoy easy access to cafes, restaurants and Kirrawee station.

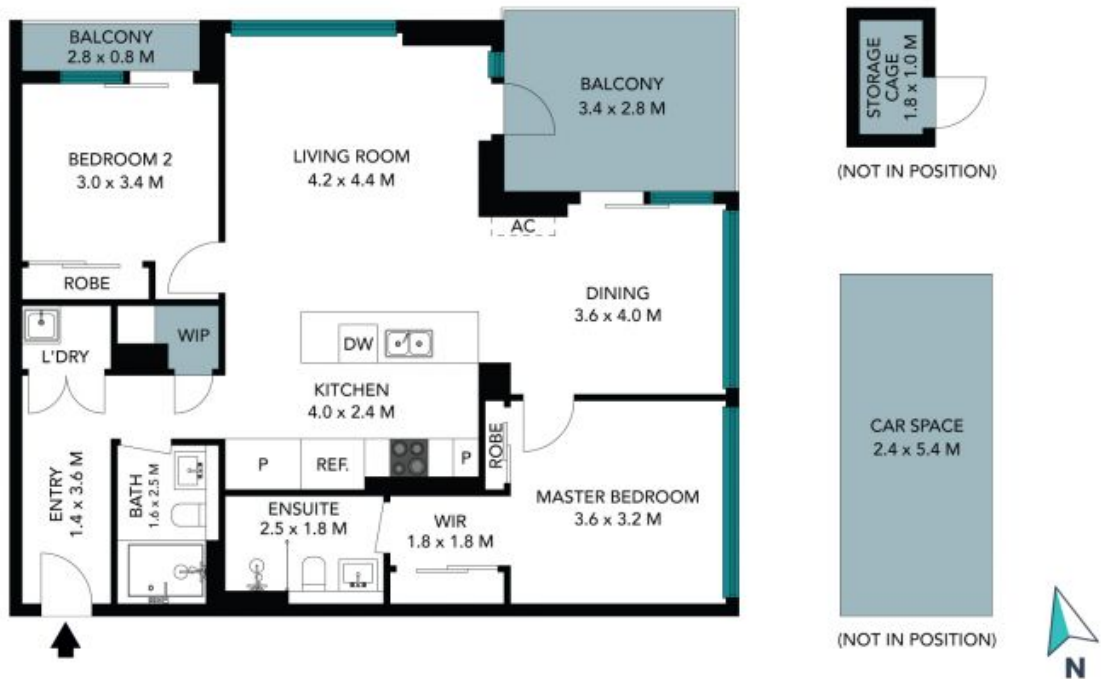
- Open living and dining zone effortlessly connects with North facing balcony
- Spacious interiors are enhanced by high ceilings and abundant natural light
- Gourmet kitchen with Smeg appliances, stone benchtops, gas cooking
- Two generous bedrooms with built-in robes, ensuite to main, both with access to balcony
- Two designer bathrooms including full main bathroom plus ensuite
- Air conditioning, gas heating/barbecue bayonets, huge internal laundry, ample storage
- Parking space and storage cage close to lift access for ultimate convenience

Price: Contact agent
Council Rates: \$367.50 p/q
Water Rates: \$172.00 p/q
Strata Rates: \$1,600.65 p/q



Kiran Menon

0409 278 346



The floor plan is not to scale; measurements are indicative and in metres. Exterior elements are not in position. Plans should not be relied on. Interested parties should make and rely on their own enquiries. All other information provided has been collected from reliable sources but cannot be guaranteed for accuracy.



The floor plan is not to scale; measurements are indicative and in metres. All features included in this 3D plan are for inspiration purposes only. This is not an exact replica of the property or the position of exterior elements. Plans should not be relied on. Interested parties should make and rely on their own enquiries.