

120 Archer Street Roseville, NSW 3  1  3 

**Renovate or Redevelop**

- Generous rooms, high ornate ceilings with picture rails
- Light & airy traditional front lounge with original fireplace
- Updated gas kitchen, sunroom/dining, modern bathroom
- 695sqm block, wide 15m frontage, gated parking, LUG
- 700m to Roseville station, village shops, cafes & cinema
- 1.1km to Chatswood rail & metro, shopping & business
- Convenient to parks, sports facilities, golf course & marina
- Lindfield Learning Village, Willoughby Girls HS catchment

**Inspect:** Saturday, 19th October 2024 1:00 - 1:30  
**Auction:** 09/11/2024 02:30 pm  
**Price:** Auction Guide \$2,750,000

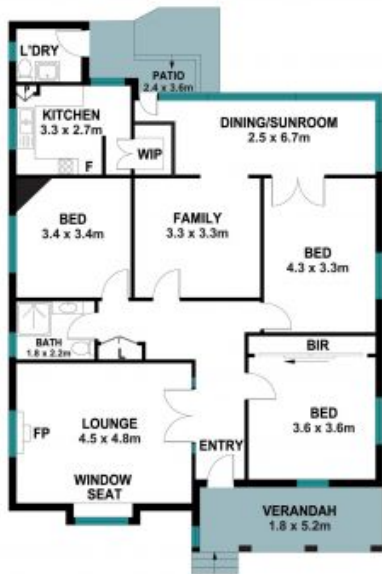


**Jimmy Psaltis**  
0411 129 221



**Jill Henry**  
0416 493 555

120 Archer Street  
Roseville



The site plan and floor plan are not to scale; measurements are indicative and in metres. Bushes and trees are placed for illustration purposes. Plans should not be relied on. Interested parties should make and rely on their own enquiries. All other information provided has been collected from reliable sources but cannot be guaranteed for accuracy.