

STONE



11/1-5 Studio Drive Pacific Pines, QLD

3 

2 

2 

Ready for Immediate Occupancy: Your Blank Canvas Awaits!

- Spacious, light-filled open plan living areas for meals/dining and family time
- Flexible layout with ample space for weekend gatherings and entertaining
- Three well-sized bedrooms, all with built-in robes and plenty of natural light
- Generous backyard with ample space for outdoor activities for pets and play
- Small shed onsite for workbench or additional storage of the tools and toys
- NBN connectivity for seamless internet, separate laundry area with cupboards
- An attractive investment opportunity due to its location, floorplan and backyard
- Currently empty, body corporate fees of approximately \$120.00 per week

Price:

Offers Over \$685,000



Shane Evans

0416 193 663



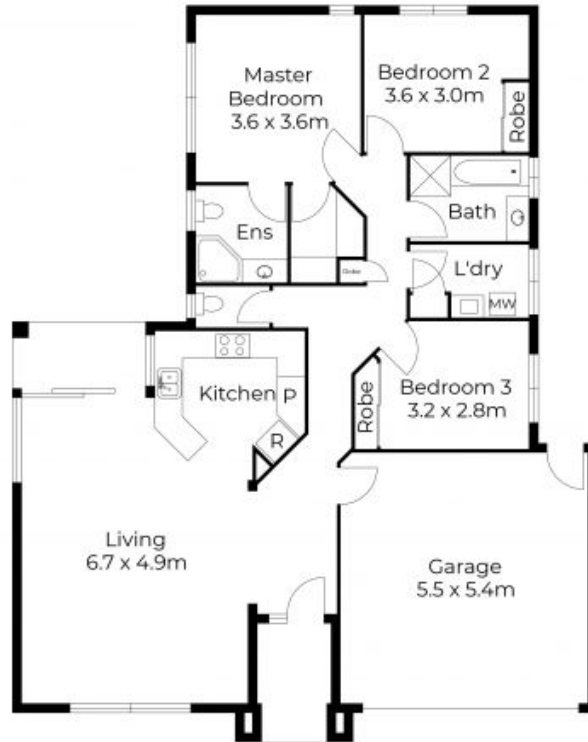
Marcello Giardina

0468 611 953



Floor plans and site plans are for illustrative purposes only. They are not part of any legal document or title and are subject to errors, omission, and inaccuracies. Whilst every attempt has been made to ensure the accuracy of this plan, measurements of doors, windows, rooms, cupboards etc are approximate only.

APPROXIMATE AREA
LIVING AREA : 109 m²
TOTAL AREA : 139 m²



Floor plans and site plans are for illustrative purposes only. They are not part of any legal document or title and are subject to errors, omission, and inaccuracies. Whilst every attempt has been made to ensure the accuracy of this plan, measurements of doors, windows, rooms, outboards etc are approximate only.

APPROXIMATE AREA
 LIVING AREA : 109 m²
 TOTAL AREA : 139 m²