



1301/10 Regent Street Wollongong, NSW

2 2 1

Resort-style executive luxury footsteps from CBD

A glorious modern retreat with its sun-drenched south west aspect, large balcony and uninterrupted escarpment and ocean views, this thirteenth floor 'Signature' residence offers apartment living in the finest class. Enjoying a wide range of residents' amenities, and premium proximity to cafes, nightlife and the city centre, it blends high-impact designer style with unparalleled Wollongong convenience.

- Ultra-contemporary floor plan showcasing a perfect aspect taking in water, city and escarpment views
- Wraparound outlooks to mountains, city, lighthouse and spectacular ocean sunrise
- Sleek flow to undercover alfresco from lounge/dining area and both bedrooms
- Quality polyurethane kitchen with 40mm waterfall-edge stone benchtops
- Robes and ensuite, A/C, intercom and lift access, secure parking plus storage
- Tightly held resort-style complex providing a pool, gym and concierge service
- Approx. 300m walk to station, free bus and Beaton Park, approx. 650m to Wollongong Public School

The below rates are provided as a guide:

Inspect: Thursday, 17th October 2024 5:00 - 5:30
Saturday, 19th October 2024 11:00 - 11:30

Price: Price Guide \$835,000-\$885,000

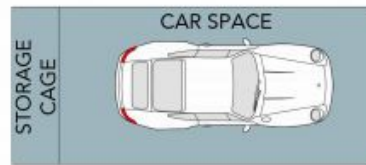


Darnell Haselau
0426 400 240

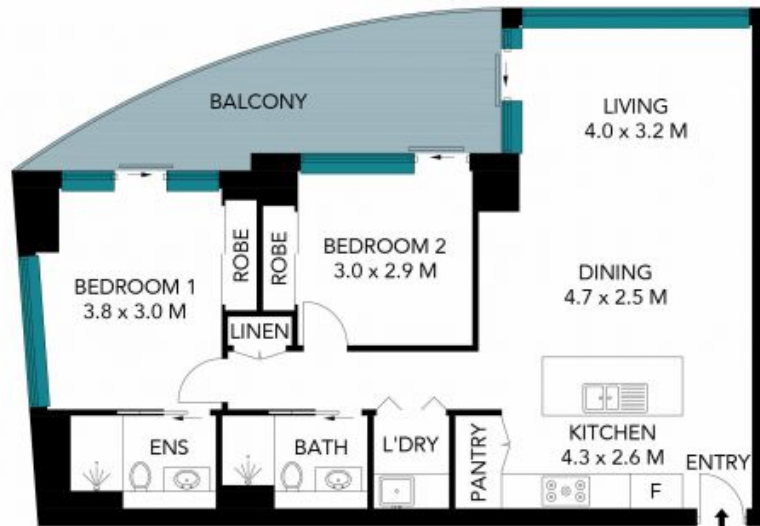


Thanos Ellenis
0421 381 696

1301/10 Regent Street
Wollongong



(NOT IN POSITION)



The site plan and floor plan are not to scale; measurements are indicative and in metres. Bushes and trees are placed for illustration purposes. Plans should not be relied on. Interested parties should make and rely on their own enquiries. All other information provided has been collected from reliable sources but cannot be guaranteed for accuracy.