



1 Rix Drive Upper Coomera, QLD



Your Perfect Summer Retreat Awaits

Welcome to 1 Rix Drive, a stunning family retreat set on a generous 660sqm corner block in the desirable, family-friendly Upper Coomera Parklands, in the heart of Upper Coomera. This beautifully maintained property is packed with features that promise comfort, space and convenience, starting with the near-new sparkling inground swimming pool with new chlorinator cell perfect for cooling off during Queensland's summer days or enjoying fun-filled weekends with family and friends.

Just a short drive away, you'll find a variety of quality public and private schools, Westfield Coomera, local specialty shops, recreational parks, and convenient access to both heavy and light rail, as well as the M1 for easy travel to Brisbane and the airports.

...

Inside, the thoughtful floorplan offers 4 spacious bedrooms, with the air-conditioned master retreat at the rear featuring an ensuite and a walk-in robe with smart, lined shelving for organized storage. The remaining 3 bedrooms are equipped with ceiling fans and built-in robes, ensuring comfort for the whole family. The light-filled, air-conditioned (10kW smart split system) in the lounge area, ensuring the perfect temperature all year-round, sea...

Price:

Offers Over \$975,000



Shane Evans

0416 193 663



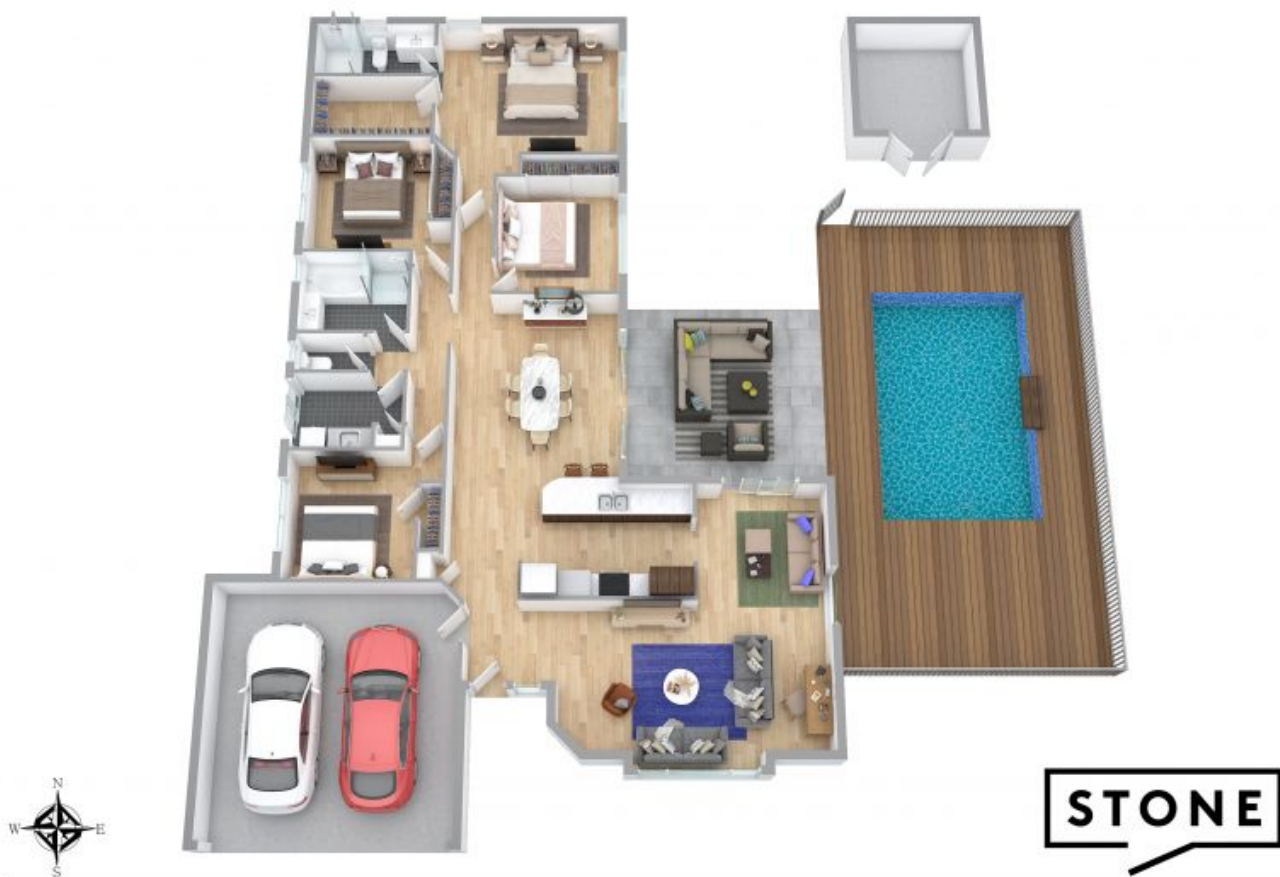
Marcello Giardina

0468 611 953



Floor plans and site plans are for illustrative purposes only. They are not part of any legal document or title and are subject to errors, omission, and inaccuracies. Whilst every attempt has been made to ensure the accuracy of this plan, measurements of doors, windows, rooms, cupboards etc are approximate only.

APPROXIMATE AREA
LIVING AREA : 150m²
TOTAL AREA : 212m²



STONE

Floor plans and site plans are for illustrative purposes only. They are not part of any legal document or title and are subject to errors, omission, and inaccuracies. Whilst every attempt has been made to ensure the accuracy of this plan, measurements of doors, windows, rooms, cupboards etc are approximate only.

APPROXIMATE AREA
 LIVING AREA : 150 m²
 TOTAL AREA : 255 m²