



35/522-524 Pacific Highway Mount Colah, NSW

3

2

2

### Penthouse with a difference !

Situated on the top floor of a contemporary complex, this elegant split-level penthouse offers three bedrooms and breath taking panoramic views of the lush district. The home features carpeted flooring throughout, complemented by an expansive oversized wrap-around balcony that connects both the living areas and bedrooms, creating an exceptional indoor-outdoor living experience.

Easily flow from the open-plan living area to the generous entertaining balcony, where you can enjoy stunning sunrises and sunsets.

#### Property Highlights:

- Impressive high ceilings flooded with natural light
- A sophisticated combination of tile and carpet flooring
- Gourmet kitchen equipped with stone countertops, a stainless-steel gas cooktop, oven, and dishwasher
- Additional bedrooms featuring built-in wardrobes and balcony access

**Inspect:**

Saturday, 19th October 2024 10:00 - 10:30

**Price:**

Guide \$1,000,000

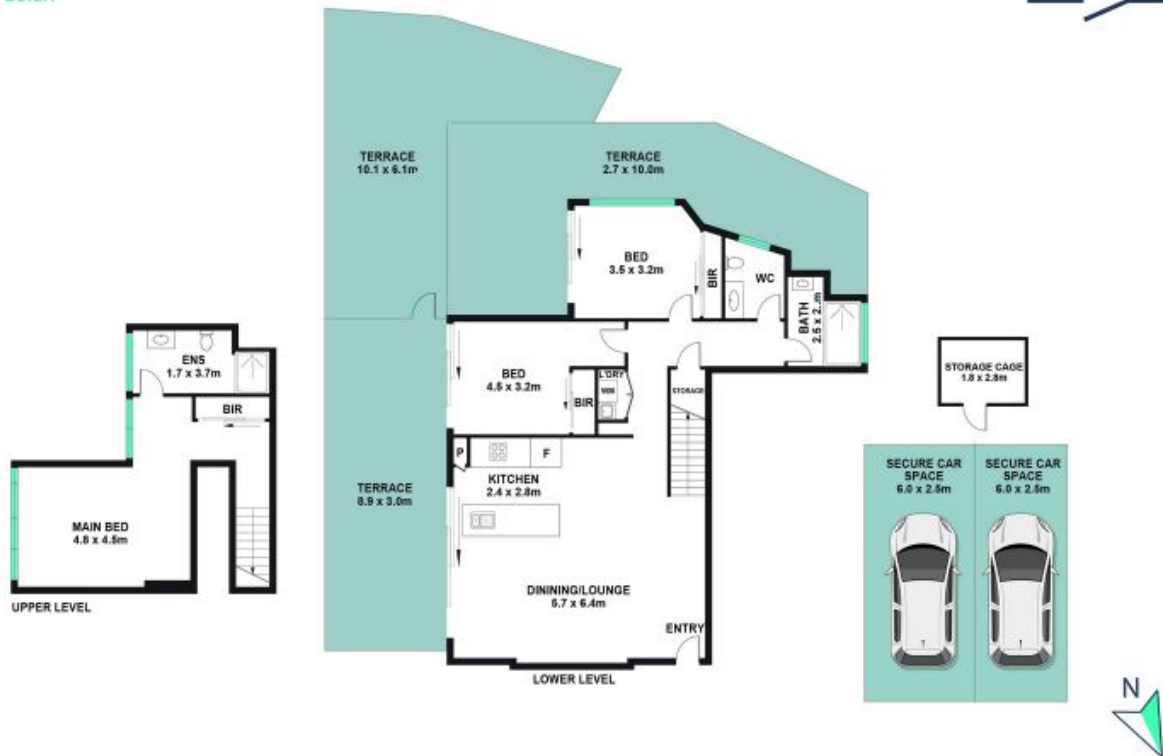
**Council Rates:** \$276.68 p/q



**Mathew Ferraro**

0416 449 073

35/522 Pacific Highway  
Mount Colah



The site plan and floor plan are not to scale; measurements are indicative and in metres. Bushes and trees are placed for illustration purposes. Plans should not be relied on. Interested parties should make and rely on their own enquiries. All other information provided has been collected from reliable sources but cannot be guaranteed for accuracy.