

41 Talfourd Street Glebe, NSW



MODERN GLEBE TERRACE IN A FANTASTIC LOCATION!

With an abundance of natural light, this Victorian terrace is only minutes to the city, vibrant cafes and village shops.

Features Include:

- Formal and informal living with ornamental fireplaces and timber flooring
- Superb galley kitchen, with gas cooktop and dishwasher
- North facing alfresco area
- Two generous sized bedrooms with built-in wardrobes, private balconies and ceiling fans
- Lower level home office/study and or storage room
- Double lock-up parking with rear lane access (two small cars only or one large car)
- Two split system air conditioning units

Available Now.

Inspect: Saturday, 19th October 2024 11:00 - 11:15

Price: \$1195 pw

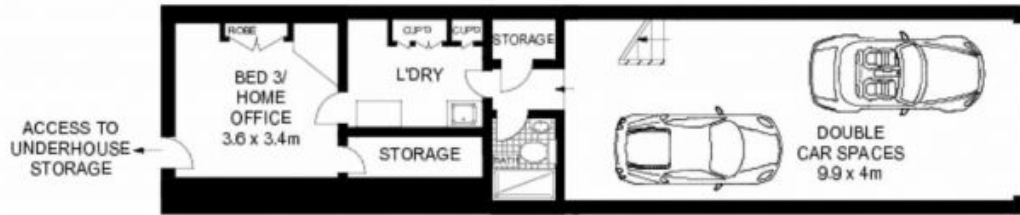
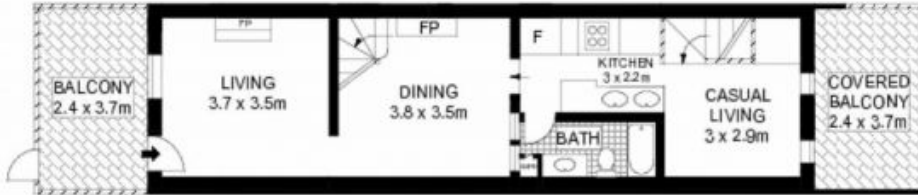
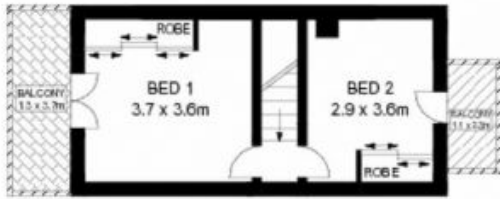
Bond: \$4,780

Available Date: 11/10/2024



Jacqui Stanley

0419 024 043



Scale in metres. Indicative only. Dimensions are approximate. All information contained herein is gathered from sources we believe to be reliable. However we cannot guarantee it's accuracy and interested persons should rely on their own enquiries.



41 Talfourd Street, Glebe