



16 Greendragon Crescent Upper Coomera, QLD

4 

2 

2 

## Expansive Family Living in Coomera Springs

Welcome to 16 Greendragon Crescent, a wonderfully expansive Coral Homes residence built in 2007 that combines style, space, and comfort. This currently empty and ready for immediate occupation 4-bedroom home with an additional office offers a relaxed family lifestyle in the heart of Coomera Springs. Located within close proximity to premier shopping and dining, parks for recreation, and first-rate schooling options including Coomera Springs Primary School, Assisi Catholic College, and Coomera Anglican College, this home is perfectly positioned for convenience and ease.

...

The home also includes a master bedroom with an ensuite and walk-in robe, a tiled office/study ideal for a home-based business, 9-foot ceiling throughout, solar power, 8-zone DAIKIN ducted air-conditioning/heating system, timber blinds, a keypad security system, and a double lock-up garage with overhead storage....

...

Set on a 627sqm block with a wide 19m street frontage, the property boasts double-gated side access leading to a caravan/boat parking bay, fully landscaped backyard that spills out from the sensational, oversized alfresco area. Whether you're hosting large gatherings or enjoying quiet family time, this outdoor space offers privacy and comfort, sheltered from...

**Price:**

Offers Over \$920,000



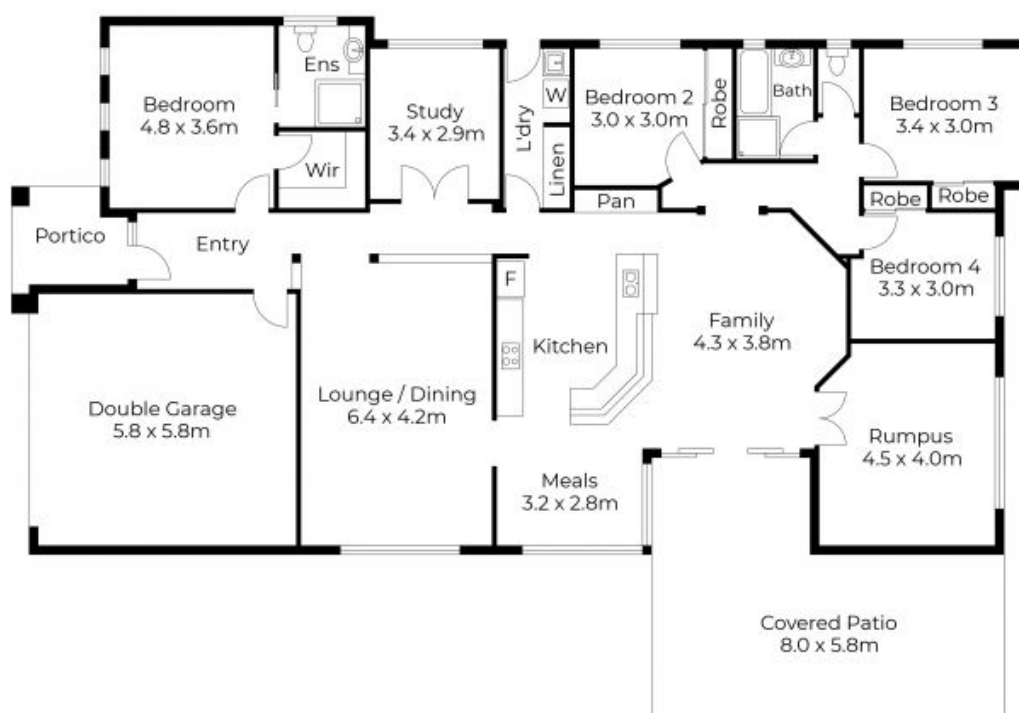
**Shane Evans**

0416 193 663



**Marcello Giardina**

0468 611 953



Floor plans and site plans are for illustrative purposes only. They are not part of any legal document or title and are subject to errors, omission, and inaccuracies. Whilst every attempt has been made to ensure the accuracy of this plan, measurements of doors, windows, rooms, cupboards etc are approximate only.

APPROXIMATE AREA  
LIVING AREA : 193m<sup>2</sup>  
TOTAL AREA : 263m<sup>2</sup>





Floor plans and site plans are for illustrative purposes only. They are not part of any legal document or title and are subject to errors, omission, and inaccuracies. Whilst every attempt has been made to ensure the accuracy of this plan, measurements of doors, windows, rooms, cupboards etc are approximate only.