



C1112/30 Shepherd Street Liverpool, NSW



MODERN & SPACIOUS 2 BEDROOM WITH STUDY IN LIVERPOOL

Apply online to <https://t-app.com.au/stonemaroubra>

This Huge Apartment is sunny and comfortable. Open space combined living/dining area with access to the balcony, minutes to Liverpool Train Station, Liverpool Hospital, Westfield, Liverpool TAFE, Local Shops, Schools, parks, and the Paper Mill Cafe & Dining Quarters which will have numerous dining & bar venues to choose from.

The landscape of one of Sydney's oldest heritage sites is changing into Liverpool's most sought-after new address, setting the standard of luxury living in Greater Western Sydney.

Features:

- *Large 2 bedroom with huge Built-in Wardrobe
- *Modern Bathroom with Mirror cabinet and large Shower
- *Gourmet Kitchen with High-Quality Appliances and GAS Cooktop
- *Dryer in the internal laundry

Inspect:

Saturday, 19th October 2024 12:30 - 1:30

Price:

\$680 pw

Available Date: 19/10/2024



Faentina Young

0416 808 801

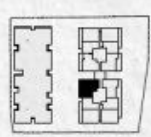


Faentina Young

0416 808 801



THE **x**BINDERY
THE PAPER MILL ON SCARBOROUGH RIVER



2 BEDROOM + STUDY

APARTMENT NUMBER	LEVEL
C6.12	6
C7.12	7
C8.12	8
C9.12	9
C10.12	10
C11.12	11
C12.12	12
C13.12	13
C14.11	14
C15.12	15
C16.12	16
C17.12	17
C18.12	18
C19.12	19
C20.12	20

AREA	
INTERNAL	81m ²
EXTERNAL	24m ²
TOTAL	105m²

WOOD
ASPECT Studios



NOTES: 1. Furniture items not included. 2. Refer to drawings attached for list of fixtures, finishes and colours.



LIVETHEPAPERMILL.COM.AU